

A1220

Leader in Biomolecular Solutions for Life Science



# APOH Rabbit pAb

Catalog No.: A1220

## Basic Information

### Observed MW

45kDa

### Calculated MW

38kDa

### Category

Polyclonal Antibody

### Applications

WB,IF/ICC,ELISA

### Cross-Reactivity

Human,Mouse

## Background

Apolipoprotein H, also known as beta-2-glycoprotein I, is a component of circulating plasma lipoproteins. It has been implicated in a variety of physiologic pathways including lipoprotein metabolism, coagulation, hemostasis, and the production of antiphospholipid autoantibodies. APOH may be a required cofactor for anionic phospholipid binding by the antiphospholipid autoantibodies found in sera of many patients with lupus and primary antiphospholipid syndrome (APS). The anti-beta (2) glycoprotein I antibodies from APS patients, mediate inhibition of activated protein C which has anticoagulant properties. Because beta-2-GPI is the main autoantigen in patients with APS, the disruption of this pathway by autoantibodies may be an important mechanism for thrombosis in patients with APS.

## Recommended Dilutions

**WB** 1:500 - 1:2000

**IF/ICC** 1:50 - 1:200

**ELISA** Recommended starting concentration is 1 µg/mL. Please optimize the concentration based on your specific assay requirements.

## Immunogen Information

### Gene ID

350

### Swiss Prot

P02749

### Immunogen

Recombinant fusion protein containing a sequence corresponding to amino acids 21-345 of human APOH (NP\_000033.2).

### Synonyms

BG; B2G1; B2GP1; APOH

## Contact

 [www.abclonal.com](http://www.abclonal.com)

## Product Information

### Source

Rabbit

### Isotype

IgG

### Purification

Affinity purification

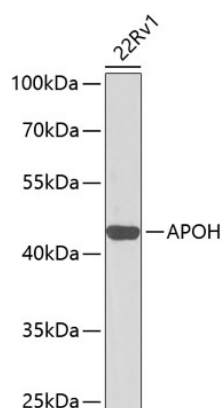
### Storage

Store at -20°C. Avoid freeze / thaw cycles.

Buffer: PBS with 0.02% sodium azide, 50% glycerol, pH7.3.

## Validation Data

---



Western blot analysis of lysates from 22Rv1 cells, using APOH Rabbit pAb (A1220) at 1:1000 dilution.

Secondary antibody: HRP-conjugated Goat anti-Rabbit IgG (H+L) (AS014) at 1:10000 dilution.

Lysates/proteins: 25µg per lane.

Blocking buffer: 3% nonfat dry milk in TBST.

Detection: ECL Basic Kit (RM00020).

Exposure time: 30s.