

A12222

Leader in Biomolecular Solutions for Life Science



PDZD3 Rabbit pAb

Catalog No.: A12222

Basic Information

Observed MW

56kDa

Calculated MW

61kDa

Category

Polyclonal Antibody

Applications

WB,ELISA

Cross-Reactivity

Human,Mouse

Background

Guanylyl cyclase C (GCC, or GUCY2C; MIM 601330) produces cGMP following the binding of either endogenous ligands or heat-stable enterotoxins secreted by E. coli and other enteric bacteria. Activation of GCC initiates a signaling cascade that leads to phosphorylation of the cystic fibrosis transmembrane conductance regulator (CFTR; MIM 602421), followed by a net efflux of ions and water into the intestinal lumen. IKEPP is a regulatory protein that associates with GCC and regulates the amount of cGMP produced following receptor stimulation (Scott et al., 2002 [PubMed 11950846]).

Recommended Dilutions

WB 1:500 - 1:2000

ELISA Recommended starting concentration is 1 µg/mL. Please optimize the concentration based on your specific assay requirements.

Immunogen Information

Gene ID

79849

Swiss Prot

Q86UT5

Immunogen

Recombinant fusion protein containing a sequence corresponding to amino acids 1-180 of human PDZD3 (NP_079067.3).

Synonyms

IKEPP; PDZD3; PDZK2

Contact



www.abclonal.com

Product Information

Source

Rabbit

Isotype

IgG

Purification

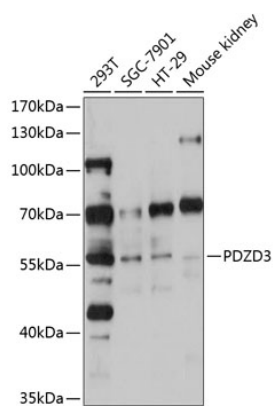
Affinity purification

Storage

Store at -20°C. Avoid freeze / thaw cycles.

Buffer: PBS with 0.02% sodium azide, 50% glycerol, pH7.3.

Validation Data



Western blot analysis of various lysates using PDZD3 Rabbit pAb (A12222) at 1:1000 dilution.

Secondary antibody: HRP-conjugated Goat anti-Rabbit IgG (H+L) (AS014) at 1:10000 dilution.

Lysates/proteins: 25µg per lane.

Blocking buffer: 3% nonfat dry milk in TBST.

Detection: ECL Basic Kit (RM00020).

Exposure time: 30s.