

A1225

Leader in Biomolecular Solutions for Life Science



## GIPC2 Rabbit pAb

Catalog No.: A1225

### Basic Information

#### Observed MW

34kDa

#### Calculated MW

34kDa

#### Category

Polyclonal Antibody

#### Applications

WB,ELISA

#### Cross-Reactivity

Human

### Background

Enables identical protein binding activity. Located in extracellular exosome.

### Recommended Dilutions

WB 1:500 - 1:2000

### Immunogen Information

#### Gene ID

54810

#### Swiss Prot

Q8TF65

#### Immunogen

Recombinant fusion protein containing a sequence corresponding to amino acids 1-315 of human GIPC2 (NP\_060125.4).

#### Synonyms

SEMCAP2; SEMCAP-2; GIPC2

### Contact



[www.abclonal.com](http://www.abclonal.com)

### Product Information

#### Source

Rabbit

#### Isotype

IgG

#### Purification

Affinity purification

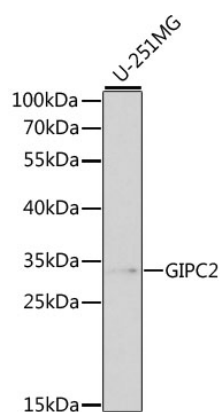
#### Storage

Store at -20°C. Avoid freeze / thaw cycles.

Buffer: PBS with 0.02% sodium azide, 50% glycerol, pH7.3.

## Validation Data

---



Western blot analysis of extracts of various cell lines, using GIPC2 antibody (A1225) at 1:1000 dilution.

Secondary antibody: HRP Goat Anti-Rabbit IgG (H+L) (AS014) at 1:10000 dilution.

Lysates/proteins: 25µg per lane.

Blocking buffer: 3% nonfat dry milk in TBST.

Detection: ECL Basic Kit (RM00020).