

A12319

Leader in Biomolecular Solutions for Life Science



MAP1LC3A Rabbit mAb

Catalog No.: A12319

Recombinant

5 Publications

Basic Information

Observed MW

14kDa,16kDa/16kDa

Calculated MW

14kDa

Category

SMab Recombinant Monoclonal
Antibody

Applications

WB,IP,ELISA

Cross-Reactivity

Human,Mouse,Rat

CloneNo number

ARC2636

Background

MAP1A and MAP1B are microtubule-associated proteins which mediate the physical interactions between microtubules and components of the cytoskeleton. MAP1A and MAP1B each consist of a heavy chain subunit and multiple light chain subunits. The protein encoded by this gene is one of the light chain subunits and can associate with either MAP1A or MAP1B. Two transcript variants encoding different isoforms have been found for this gene. The expression of variant 1 is suppressed in many tumor cell lines, suggesting that may be involved in carcinogenesis.

Recommended Dilutions

WB 1:1000 - 1:2000

IP 0.5µg-4µg antibody for
200µg-400µg extracts
of whole cells

ELISA Recommended starting
concentration is 1
µg/mL. Please optimize
the concentration
based on your specific
assay requirements.

Immunogen Information

Gene ID
84557

Swiss Prot
Q9H492

Immunogen

A synthetic peptide corresponding to a sequence within amino acids 1-100 of human MAP1LC3A (Q9H492).

Synonyms

LC3; LC3A; ATG8E; MAP1ALC3; MAP1BLC3; MAP1LC3A

Product Information

Source
Rabbit

Isotype
IgG

Purification
Affinity purification

Storage

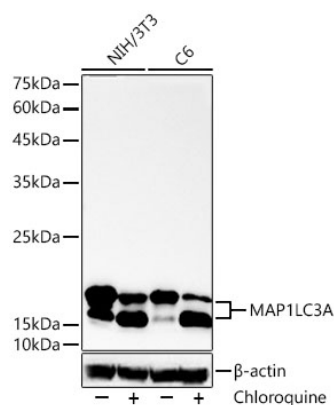
Store at -20°C. Avoid freeze / thaw cycles.

Buffer: PBS with 0.02% sodium azide,0.05% BSA,50% glycerol,pH7.3.

Contact

 www.abclonal.com

Validation Data



Western blot analysis of lysates from NIH/3T3, C6 cells using MAP1LC3A Rabbit mAb (A12319) at 1:1000 dilution. NIH/3T3 cells and C6 cells were treated with Chloroquine (50 μ M) at 37°C for 20 hours.

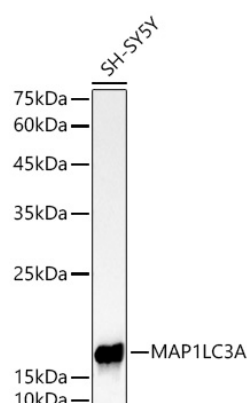
Secondary antibody: HRP-conjugated Goat anti-Rabbit IgG (H+L) (AS014) at 1:10000 dilution.

Lysates/proteins: 25 μ g per lane.

Blocking buffer: 3% nonfat dry milk in TBST.

Detection: ECL Basic Kit (RM00020).

Exposure time: 180s.



Western blot analysis of lysates from SH-SY5Y cells using MAP1LC3A Rabbit mAb (A12319) at 1:1000 dilution.

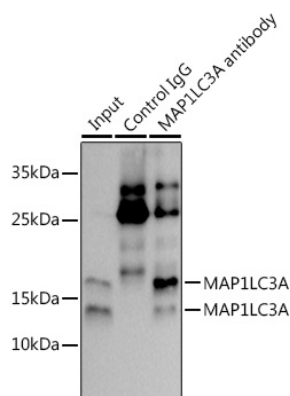
Secondary antibody: HRP-conjugated Goat anti-Rabbit IgG (H+L) (AS014) at 1:10000 dilution.

Lysates/proteins: 25 μ g per lane.

Blocking buffer: 3% nonfat dry milk in TBST.

Detection: ECL Basic Kit (RM00020).

Exposure time: 10s.



Immunoprecipitation analysis of 300 μ g extracts of NIH/3T3 cells using 3 μ g MAP1LC3A antibody (A12319). Western blot was performed from the immunoprecipitate using MAP1LC3A antibody (A12319) at a dilution of 1:1000. NIH/3T3 cells were treated with Chloroquine (50 μ M) at 37°C for 20 hours.