

A1231

Leader in Biomolecular Solutions for Life Science



CDC20 Rabbit pAb

Catalog No.: A1231

3 Publications

Basic Information

Observed MW

55kDa

Calculated MW

55kDa

Category

Polyclonal Antibody

Applications

WB,IF/ICC,ELISA

Cross-Reactivity

Human,Mouse

Background

CDC20 appears to act as a regulatory protein interacting with several other proteins at multiple points in the cell cycle. It is required for two microtubule-dependent processes, nuclear movement prior to anaphase and chromosome separation.

Recommended Dilutions

WB 1:500 - 1:2000

IF/ICC 1:50 - 1:200

ELISA Recommended starting concentration is 1 µg/mL. Please optimize the concentration based on your specific assay requirements.

Immunogen Information

Gene ID

991

Swiss Prot

Q12834

Immunogen

Recombinant fusion protein containing a sequence corresponding to amino acids 1-270 of human CDC20 (NP_001246.2).

Synonyms

CDC20A; OOMD14; p55CDC; OZEMA14; bA276H19.3; CDC20

Contact



www.abclonal.com

Product Information

Source

Rabbit

Isotype

IgG

Purification

Affinity purification

Storage

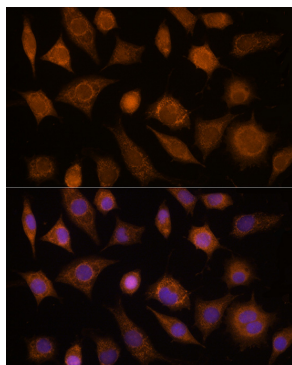
Store at -20°C. Avoid freeze / thaw cycles.

Buffer: PBS with 0.02% sodium azide,50% glycerol,pH7.3.

Validation Data



Western blot analysis of various lysates using CDC20 Rabbit pAb (A1231) at 1:1000 dilution.
Secondary antibody: HRP-conjugated Goat anti-Rabbit IgG (H+L) (AS014) at 1:10000 dilution.
Lysates/proteins: 25µg per lane.
Blocking buffer: 3% nonfat dry milk in TBST.



Immunofluorescence analysis of L929 cells using CDC20 Rabbit pAb (A1231) at dilution of 100 (40x lens).
Secondary antibody: Cy3-conjugated Goat anti-Rabbit IgG (H+L) (AS007) at 1:500 dilution. Blue: DAPI for nuclear staining.