

A12329

Leader in Biomolecular Solutions for Life Science



Dot1L/KMT4 Rabbit mAb

Catalog No.: A12329

Recombinant

4 Publications

Basic Information

Observed MW

170kDa

Calculated MW

165kDa

Category

SMab Recombinant Monoclonal
Antibody

Applications

WB,IP,ELISA

Cross-Reactivity

Human,Mouse

CloneNo number

ARC0688

Background

The protein encoded by this gene is a histone methyltransferase that methylates lysine-79 of histone H3. It is inactive against free core histones, but shows significant histone methyltransferase activity against nucleosomes.

Recommended Dilutions

WB 1:500 - 1:1000

IP 0.5µg-4µg antibody for
200µg-400µg extracts
of whole cells

ELISA Recommended starting
concentration is 1
µg/mL. Please optimize
the concentration
based on your specific
assay requirements.

Immunogen Information

Gene ID
84444

Swiss Prot
Q8TEK3

Immunogen

Synthetic peptide. This information is considered to be commercially sensitive.

Synonyms

DOT1; KMT4; Dot1L/KMT4

Product Information

Source
Rabbit

Isotype
IgG

Purification
Affinity purification

Storage

Store at -20°C. Avoid freeze / thaw cycles.

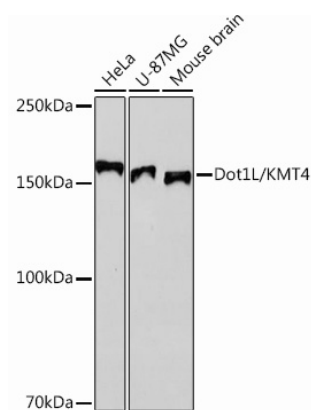
Buffer: PBS with 0.02% sodium azide,0.05% BSA,50% glycerol,pH7.3.

Contact

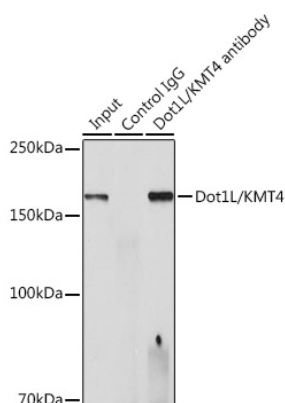


www.abclonal.com

Validation Data



Western blot analysis of various lysates using Dot1L/KMT4 Rabbit mAb (A12329) at 1:1000 dilution.
Secondary antibody: HRP-conjugated Goat anti-Rabbit IgG (H+L) (AS014) at 1:10000 dilution.
Lysates/proteins: 25µg per lane.
Blocking buffer: 3% nonfat dry milk in TBST.
Detection: ECL Basic Kit (RM00020).
Exposure time: 10s.



Immunoprecipitation analysis of 300 µg extracts from HeLa cells using 3 µg Dot1L/KMT4 Rabbit mAb (A12329). Western blot was performed from the immunoprecipitate using Dot1L/KMT4 Rabbit mAb (A12329) at a dilution of 1:1000.