

A12338

Leader in Biomolecular Solutions for Life Science



## Ku80 Rabbit mAb

Catalog No.: A12338

Recombinant

2 Publications

### Basic Information

#### Observed MW

86kDa

#### Calculated MW

83kDa

#### Category

SMab Recombinant Monoclonal  
Antibody

#### Applications

WB,IHC-P,IF/ICC,IP,ELISA

#### Cross-Reactivity

Human

#### CloneNo number

ARC0706

### Recommended Dilutions

**WB** 1:1000 - 1:6000

**IHC-P** 1:200 - 1:800

**IF/ICC** 1:100 - 1:1000

**IP** 0.5µg-4µg antibody for  
200µg-400µg extracts  
of whole cells

**ELISA** Recommended starting  
concentration is 1  
µg/mL. Please optimize  
the concentration  
based on your specific  
assay requirements.

### Contact



[www.abclonal.com](http://www.abclonal.com)

### Background

The protein encoded by this gene is the 80-kilodalton subunit of the Ku heterodimer protein which is also known as ATP-dependant DNA helicase II or DNA repair protein XRCC5. Ku is the DNA-binding component of the DNA-dependent protein kinase, and it functions together with the DNA ligase IV-XRCC4 complex in the repair of DNA double-strand break by non-homologous end joining and the completion of V(D)J recombination events. This gene functionally complements Chinese hamster xrs-6, a mutant defective in DNA double-strand break repair and in ability to undergo V(D)J recombination. A rare microsatellite polymorphism in this gene is associated with cancer in patients of varying radiosensitivity.

### Immunogen Information

#### Gene ID

7520

#### Swiss Prot

P13010

#### Immunogen

A synthetic peptide corresponding to a sequence within amino acids 633-732 of human Ku80 (P13010).

#### Synonyms

KU80; KUB2; Ku86; NFIV; KARP1; KARP-1; Ku80

### Product Information

#### Source

Rabbit

#### Isotype

IgG

#### Purification

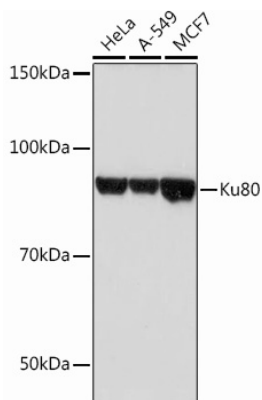
Affinity purification

#### Storage

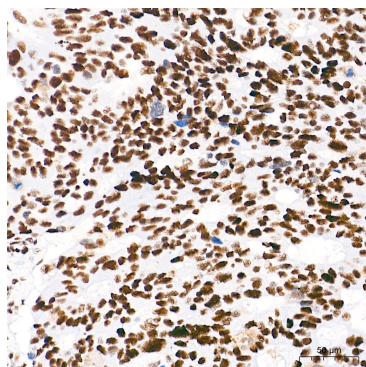
Store at -20°C. Avoid freeze / thaw cycles.

Buffer: PBS with 0.02% sodium azide,0.05% BSA,50% glycerol,pH7.3.

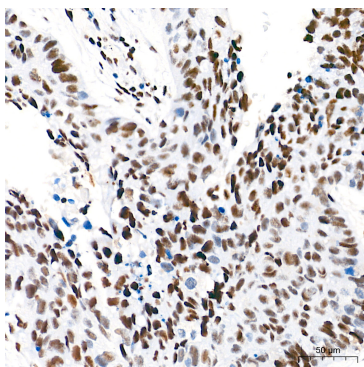
## Validation Data



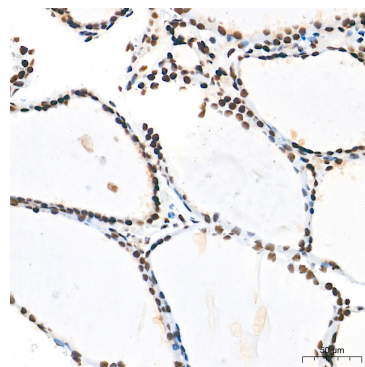
Western blot analysis of various lysates, using Ku80 Rabbit mAb (A12338) at 1 : 1000 dilution.  
 Secondary antibody: HRP-conjugated Goat anti-Rabbit IgG (H+L) (AS014) at 1:10000 dilution.  
 Lysates/proteins: 25µg per lane.  
 Blocking buffer: 3% nonfat dry milk in TBST.  
 Detection: ECL Basic Kit (RM00020).  
 Exposure time: 5s.



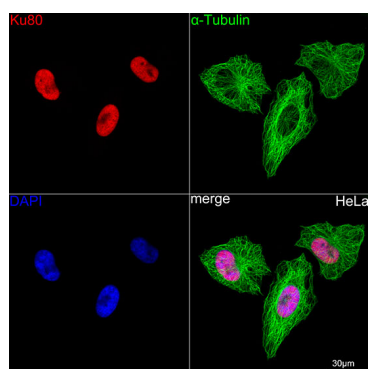
Immunohistochemistry analysis of paraffin-embedded Human colon carcinoma tissue using Ku80 Rabbit mAb (A12338) at a dilution of 1:500 (40x lens). High pressure antigen retrieval performed with 0.01M Tris-EDTA Buffer (pH 9.0) prior to IHC staining.



Immunohistochemistry analysis of paraffin-embedded Human lung cancer tissue using Ku80 Rabbit mAb (A12338) at a dilution of 1:500 (40x lens). High pressure antigen retrieval performed with 0.01M Tris-EDTA Buffer (pH 9.0) prior to IHC staining.



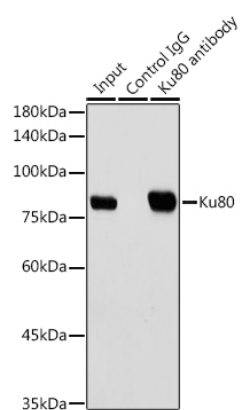
Immunohistochemistry analysis of paraffin-embedded Human thyroid tissue using Ku80 Rabbit mAb (A12338) at a dilution of 1:500 (40x lens). High pressure antigen retrieval performed with 0.01M Tris-EDTA Buffer (pH 9.0) prior to IHC staining.



Confocal imaging of HeLa cells using Ku80 Rabbit mAb (A12338, dilution 1:100) (Red). The cells were counterstained with α-Tubulin Mouse mAb (AC012, dilution 1:400) (Green). DAPI was used for nuclear staining (blue). Objective: 60x.

## Validation Data

---



Immunoprecipitation analysis of 300 µg extracts of HeLa cells using 3 µg Ku80 antibody (A12338). Western blot was performed from the immunoprecipitate using Ku80 antibody (A12338) at a dilution of 1:1000.