

A1234

Leader in Biomolecular Solutions for Life Science



## PLA2G2A Rabbit pAb

Catalog No.: A1234

### Basic Information

#### Observed MW

18kDa

#### Calculated MW

16kDa

#### Category

Polyclonal Antibody

#### Applications

WB, ELISA

#### Cross-Reactivity

Human

### Background

The protein encoded by this gene is a member of the phospholipase A2 family (PLA2). PLA2s constitute a diverse family of enzymes with respect to sequence, function, localization, and divalent cation requirements. This gene product belongs to group II, which contains secreted form of PLA2, an extracellular enzyme that has a low molecular mass and requires calcium ions for catalysis. It catalyzes the hydrolysis of the sn-2 fatty acid acyl ester bond of phosphoglycerides, releasing free fatty acids and lysophospholipids, and thought to participate in the regulation of the phospholipid metabolism in biomembranes. Several alternatively spliced transcript variants with different 5' UTRs have been found for this gene.

### Recommended Dilutions

WB 1:100 - 1:500

### Immunogen Information

#### Gene ID

5320

#### Swiss Prot

P14555

#### Immunogen

Recombinant fusion protein containing a sequence corresponding to amino acids 21-144 of human PLA2G2A (NP\_001155201.1).

#### Synonyms

MOM1; PLA2; PLA2B; PLA2L; PLA2S; PLAS1; sPLA2; PLA2G2A

### Contact



[www.abclonal.com](http://www.abclonal.com)

### Product Information

#### Source

Rabbit

#### Isotype

IgG

#### Purification

Affinity purification

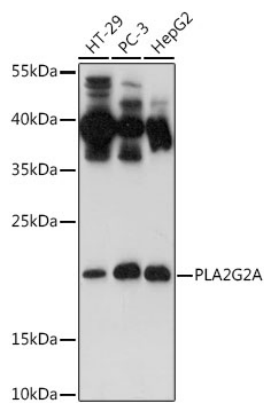
#### Storage

Store at -20°C. Avoid freeze / thaw cycles.

Buffer: PBS with 0.02% sodium azide, 50% glycerol, pH 7.3.

## Validation Data

---



Western blot analysis of extracts of various cell lines, using PLA2G2A antibody (A1234) at 1:500 dilution.

Secondary antibody: HRP Goat Anti-Rabbit IgG (H+L) (AS014) at 1:10000 dilution.

Lysates/proteins: 25µg per lane.

Blocking buffer: 3% nonfat dry milk in TBST.

Detection: ECL Basic Kit (RM00020).

Exposure time: 90s.