

A12415

Leader in Biomolecular Solutions for Life Science



CD3E Antigen Rabbit pAb

Catalog No.: A12415

3 Publications

Basic Information

Observed MW

23kDa

Calculated MW

23kDa

Category

Polyclonal Antibody

Applications

WB,IHC-P,IF/ICC,ELISA

Cross-Reactivity

Human,Mouse,Rat

Background

The protein encoded by this gene is the CD3-epsilon polypeptide, which together with CD3-gamma, -delta and -zeta, and the T-cell receptor alpha/beta and gamma/delta heterodimers, forms the T-cell receptor-CD3 complex. This complex plays an important role in coupling antigen recognition to several intracellular signal-transduction pathways. The genes encoding the epsilon, gamma and delta polypeptides are located in the same cluster on chromosome 11. The epsilon polypeptide plays an essential role in T-cell development. Defects in this gene cause immunodeficiency. This gene has also been linked to a susceptibility to type I diabetes in women.

Recommended Dilutions

WB 1:500 - 1:1000

IHC-P 1:50 - 1:200

IF/ICC 1:50 - 1:200

ELISA Recommended starting concentration is 1 µg/mL. Please optimize the concentration based on your specific assay requirements.

Immunogen Information

Gene ID

916

Swiss Prot

P07766

Immunogen

A synthetic peptide corresponding to a sequence within amino acids 111-207 of human CD3E (NP_000724.1).

Synonyms

T3E; TCRE; IMD18; CD3epsilon; CD3E Antigen

Product Information

Source

Rabbit

Isotype

IgG

Purification

Affinity purification

Storage

Store at -20°C. Avoid freeze / thaw cycles.

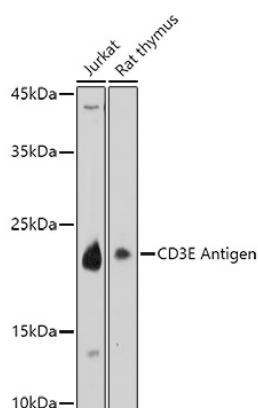
Buffer: PBS with 0.05% proclin300,50% glycerol,pH7.3.

Contact

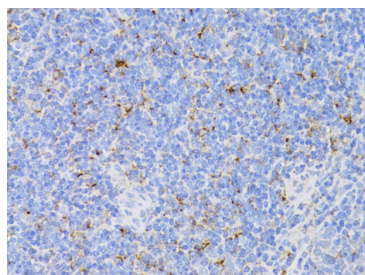


www.abclonal.com

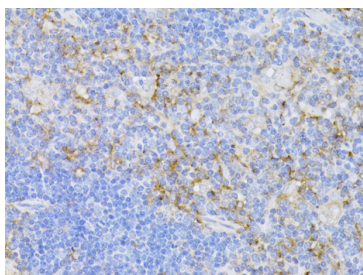
Validation Data



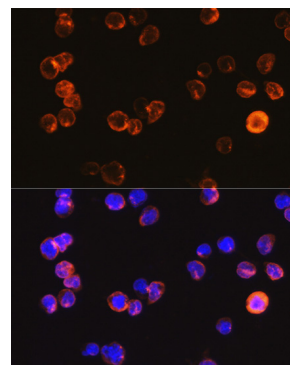
Western blot analysis of various lysates using CD3E Antigen Rabbit pAb (A12415) at 1:1000 dilution.
Secondary antibody: HRP-conjugated Goat anti-Rabbit IgG (H+L) (AS014) at 1:10000 dilution.
Lysates/proteins: 25µg per lane.
Blocking buffer: 3% nonfat dry milk in TBST.
Detection: ECL Basic Kit (RM00020).
Exposure time: 90s.



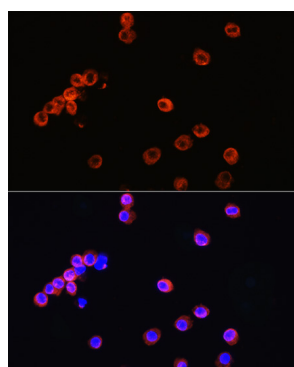
Immunohistochemistry analysis of paraffin-embedded Mouse spleen using CD3E Antigen Rabbit pAb (A12415) at dilution of 1:100 (40x lens). Microwave antigen retrieval performed with 0.01M PBS Buffer (pH 7.2) prior to IHC staining.



Immunohistochemistry analysis of paraffin-embedded Mouse thymus using CD3E Antigen Rabbit pAb (A12415) at dilution of 1:100 (40x lens). Microwave antigen retrieval performed with 0.01M PBS Buffer (pH 7.2) prior to IHC staining.



Immunofluorescence analysis of Jurkat cells using CD3E Antigen Rabbit pAb (A12415) at dilution of 1:100. Blue: DAPI for nuclear staining.



Immunofluorescence analysis of RAW264.7 cells using CD3E Antigen Rabbit pAb (A12415) at dilution of 1:100. Blue: DAPI for nuclear staining.