

A1245

Leader in Biomolecular Solutions for Life Science



PSMA3 Rabbit pAb

Catalog No.: A1245

Basic Information

Observed MW

28kDa

Calculated MW

28kDa

Category

Polyclonal Antibody

Applications

WB,IHC-P,IF/ICC,IP,ELISA

Cross-Reactivity

Human,Mouse,Rat

Background

The proteasome is a multicatalytic proteinase complex with a highly ordered ring-shaped 20S core structure. The core structure is composed of 4 rings of 28 non-identical subunits; 2 rings are composed of 7 alpha subunits and 2 rings are composed of 7 beta subunits. Proteasomes are distributed throughout eukaryotic cells at a high concentration and cleave peptides in an ATP/ubiquitin-dependent process in a non-lysosomal pathway. An essential function of a modified proteasome, the immunoproteasome, is the processing of class I MHC peptides. This gene encodes a member of the peptidase T1A family, that is a 20S core alpha subunit. Two alternative transcripts encoding different isoforms have been identified.

Recommended Dilutions

WB 1:500 - 1:1000

IHC-P 1:50 - 1:200

IF/ICC 1:100 - 1:500

IP 0.5µg-4µg antibody for
200µg-400µg extracts
of whole cells

ELISA Recommended starting
concentration is 1
µg/mL. Please optimize
the concentration
based on your specific
assay requirements.

Immunogen Information

Gene ID

5684

Swiss Prot

P25788

Immunogen

Recombinant fusion protein containing a sequence corresponding to amino acids 1-255 of human PSMA3 (NP_002779.1).

Synonyms

HC8; PSC3; PSMA3

Product Information

Source

Rabbit

Isotype

IgG

Purification

Affinity purification

Storage

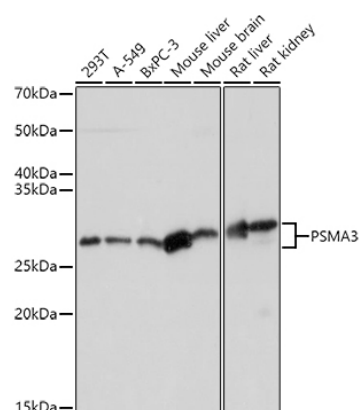
Store at -20°C. Avoid freeze / thaw cycles.

Buffer: PBS with 0.09% Sodium azide, 50% glycerol, pH7.3.

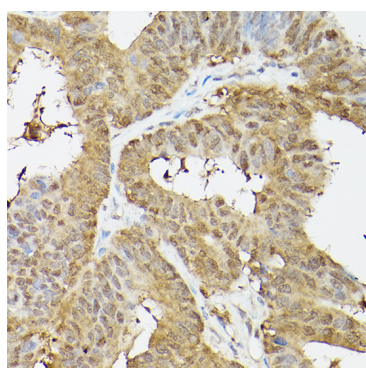
Contact

 www.abclonal.com

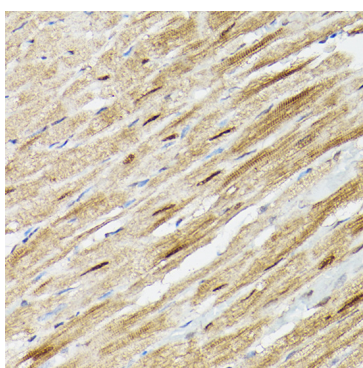
Validation Data



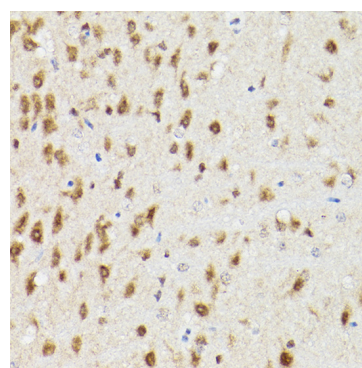
Western blot analysis of various lysates using PSMA3 Rabbit pAb (A1245) at 1:1000 dilution.
 Secondary antibody: HRP-conjugated Goat anti-Rabbit IgG (H+L) (AS014) at 1:10000 dilution.
 Lysates/proteins: 25µg per lane.
 Blocking buffer: 3% nonfat dry milk in TBST.
 Detection: ECL Basic Kit (RM00020).
 Exposure time: 3s.



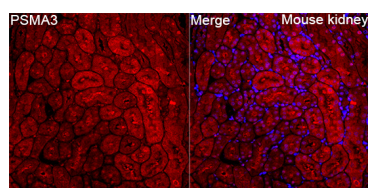
Immunohistochemistry analysis of paraffin-embedded Human colon carcinoma using PSMA3 Rabbit pAb (A1245) at dilution of 1:100 (40x lens). High pressure antigen retrieval performed with 0.01M Citrate buffer (pH 6.0) prior to IHC staining.



Immunohistochemistry analysis of paraffin-embedded Mouse heart using PSMA3 Rabbit pAb (A1245) at dilution of 1:100 (40x lens). High pressure antigen retrieval performed with 0.01M Citrate buffer (pH 6.0) prior to IHC staining.

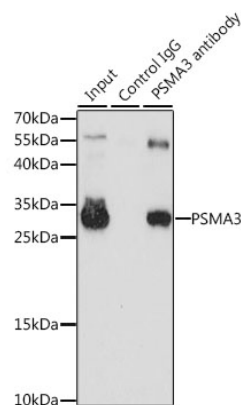


Immunohistochemistry analysis of paraffin-embedded Rat brain using PSMA3 Rabbit pAb (A1245) at dilution of 1:100 (40x lens). High pressure antigen retrieval performed with 0.01M Citrate buffer (pH 6.0) prior to IHC staining.



Immunofluorescence analysis of Mouse kidney tissue using PSMA3 Rabbit pAb (A1245) at a dilution of 1:400 (40x lens). Secondary antibody: Cy3-conjugated Goat anti-Rabbit IgG (H+L)(AS007) at 1:500 dilution. Blue: DAPI for nuclear staining. High pressure antigen retrieval performed with 0.01M Citrate Buffer (pH 6.0) prior to IF staining.

Validation Data



Immunoprecipitation analysis of 200 µg extracts of HL-60 cells, using 3 µg PSMA3 antibody (A1245). Western blot was performed from the immunoprecipitate using PSMA3 antibody (A1245) at a dilution of 1:1000.