

A12479

Leader in Biomolecular Solutions for Life Science



REG3A Rabbit pAb

Catalog No.: A12479

Basic Information

Observed MW

14-15kDa

Calculated MW

19kDa

Category

Polyclonal Antibody

Applications

WB,IHC-P,ELISA

Cross-Reactivity

Human,Mouse,Rat

Background

This gene encodes a pancreatic secretory protein that may be involved in cell proliferation or differentiation. It has similarity to the C-type lectin superfamily. The enhanced expression of this gene is observed during pancreatic inflammation and liver carcinogenesis. The mature protein also functions as an antimicrobial protein with antibacterial activity. Alternate splicing results in multiple transcript variants that encode the same protein.

Recommended Dilutions

WB 1:500 - 1:2000

IHC-P 1:50 - 1:200

ELISA Recommended starting concentration is 1 µg/mL. Please optimize the concentration based on your specific assay requirements.

Immunogen Information

Gene ID

5068

Swiss Prot

Q06141

Immunogen

Recombinant fusion protein containing a sequence corresponding to amino acids 27-175 of human REG3A (NP_002571.1).

Synonyms

HIP; PAP; PAP1; REG3; INGAP; PAP-H; PBCGF; HIP/PAP; REG-III; REG3A

Contact

 www.abclonal.com

Product Information

Source

Rabbit

Isotype

IgG

Purification

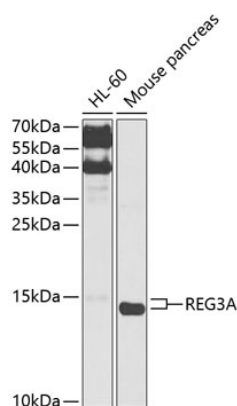
Affinity purification

Storage

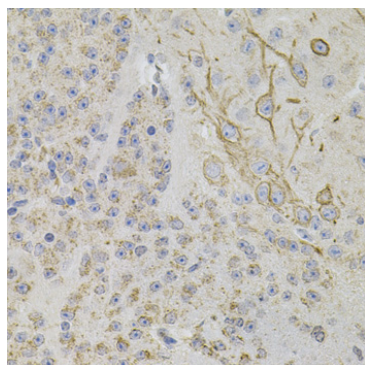
Store at -20°C. Avoid freeze / thaw cycles.

Buffer: PBS with 0.02% sodium azide, 50% glycerol, pH7.3.

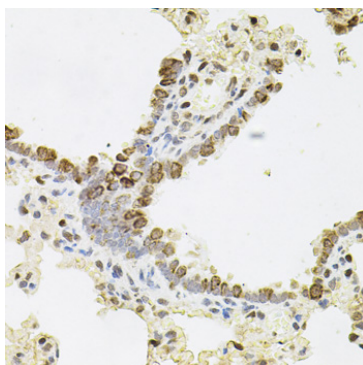
Validation Data



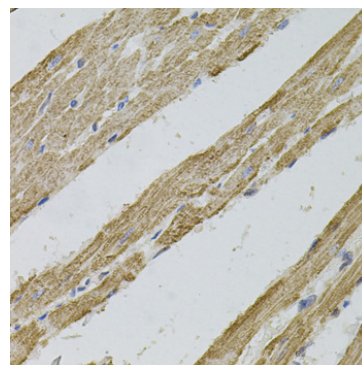
Western blot analysis of various lysates using REG3A Rabbit pAb (A12479) at 1:1000 dilution.
Secondary antibody: HRP-conjugated Goat anti-Rabbit IgG (H+L) (AS014) at 1:10000 dilution.
Lysates/proteins: 25µg per lane.
Blocking buffer: 3% nonfat dry milk in TBST.
Detection: ECL Basic Kit (RM00020).
Exposure time: 30s.



Immunohistochemistry analysis of paraffin-embedded Mouse brain using REG3A Rabbit pAb (A12479) (40x lens). Microwave antigen retrieval performed with 0.01M PBS Buffer (pH 7.2) prior to IHC staining.



Immunohistochemistry analysis of paraffin-embedded Rat lung using REG3A Rabbit pAb (A12479) (40x lens). Microwave antigen retrieval performed with 0.01M PBS Buffer (pH 7.2) prior to IHC staining.



Immunohistochemistry analysis of paraffin-embedded Rat heart using REG3A Rabbit pAb (A12479) (40x lens). Microwave antigen retrieval performed with 0.01M PBS Buffer (pH 7.2) prior to IHC staining.