

A12499

Leader in Biomolecular Solutions for Life Science



S100A12 Rabbit pAb

Catalog No.: A12499

1 Publications

Basic Information

Observed MW

Calculated MW

10kDa

Category

Polyclonal Antibody

Applications

IHC-P, ELISA

Cross-Reactivity

Human

Background

The protein encoded by this gene is a member of the S100 family of proteins containing 2 EF-hand calcium-binding motifs. S100 proteins are localized in the cytoplasm and/or nucleus of a wide range of cells, and involved in the regulation of a number of cellular processes such as cell cycle progression and differentiation. S100 genes include at least 13 members which are located as a cluster on chromosome 1q21. This protein is proposed to be involved in specific calcium-dependent signal transduction pathways and its regulatory effect on cytoskeletal components may modulate various neutrophil activities. The protein includes an antimicrobial peptide which has antibacterial activity.

Recommended Dilutions

IHC-P 1:100 - 1:500

ELISA Recommended starting concentration is 1 µg/mL. Please optimize the concentration based on your specific assay requirements.

Immunogen Information

Gene ID
6283

Swiss Prot
P80511

Immunogen

Recombinant fusion protein containing a sequence corresponding to amino acids 1-92 of human S100A12 (NP_005612.1).

Synonyms

p6; CAGC; CGRP; MRP6; CAAF1; MRP-6; ENRAGE; S100A12

Contact

 www.abclonal.com

Product Information

Source
Rabbit

Isotype
IgG

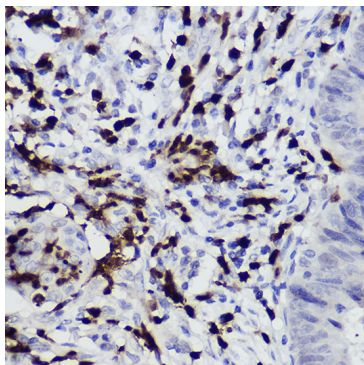
Purification
Affinity purification

Storage

Store at -20°C. Avoid freeze / thaw cycles.

Buffer: PBS with 0.02% sodium azide, 50% glycerol, pH7.3.

Validation Data



Immunohistochemistry analysis of paraffin-embedded Human colon carcinoma using S100A12 Rabbit pAb (A12499) at dilution of 1:300 (40x lens). High pressure antigen retrieval performed with 0.01M Citrate buffer (pH 6.0) prior to IHC staining.