

A12507

Leader in Biomolecular Solutions for Life Science



SLC1A4 Rabbit pAb

Catalog No.: A12507

3 Publications

Basic Information

Observed MW

56kDa

Calculated MW

56kDa

Category

Polyclonal Antibody

Applications

WB,ELISA

Cross-Reactivity

Human,Mouse,Rat

Background

The protein encoded by this gene is a sodium-dependent neutral amino acid transporter for alanine, serine, cysteine, and threonine. Defects in this gene have been associated with developmental delay, microcephaly, and intellectual disability.

Recommended Dilutions

WB 1:500 - 1:2000

ELISA Recommended starting concentration is 1 µg/mL. Please optimize the concentration based on your specific assay requirements.

Immunogen Information

Gene ID

6509

Swiss Prot

P43007

Immunogen

Recombinant fusion protein containing a sequence corresponding to amino acids 140-220 of human SLC1A4 (NP_003029.2).

Synonyms

SATT; ASCT1; SPATCCM; SLC1A4

Contact

 www.abclonal.com

Product Information

Source

Rabbit

Isotype

IgG

Purification

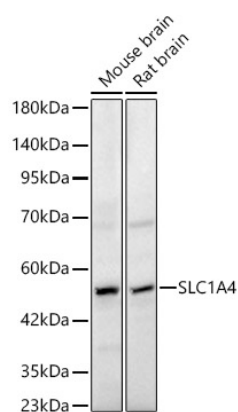
Affinity purification

Storage

Store at -20°C. Avoid freeze / thaw cycles.

Buffer: PBS with 0.05% proclin300,50% glycerol,pH7.3.

Validation Data



Western blot analysis of various lysates, using SLC1A4 Rabbit pAb (A12507) at 1:2000 dilution.

Secondary antibody: HRP-conjugated Goat anti-Rabbit IgG (H+L) (AS014) at 1:10000 dilution.

Lysates/proteins: 25µg per lane.

Blocking buffer: 3% nonfat dry milk in TBST.

Detection: ECL Basic Kit (RM00020).

Exposure time: 10s.