

A12703

Leader in Biomolecular Solutions for Life Science



CD248 Rabbit pAb

Catalog No.: A12703

Basic Information

Observed MW

81kDa/165kDa

Calculated MW

81kDa

Category

Polyclonal Antibody

Applications

WB,ELISA

Cross-Reactivity

Human,Mouse,Rat

Background

Predicted to enable extracellular matrix binding activity and extracellular matrix protein binding activity. Predicted to be involved in cell migration. Predicted to act upstream of or within several processes, including anatomical structure regression; lymph node development; and positive regulation of endothelial cell apoptotic process. Located in extracellular exosome.

Recommended Dilutions

WB 1:1000 - 1:5000

ELISA Recommended starting concentration is 1 µg/mL. Please optimize the concentration based on your specific assay requirements.

Immunogen Information

Gene ID

57124

Swiss Prot

Q9HCU0

Immunogen

Recombinant protein (or fragment). This information is considered to be commercially sensitive.

Synonyms

TEM1; CD164L1; CD248

Contact



www.abclonal.com

Product Information

Source

Rabbit

Isotype

IgG

Purification

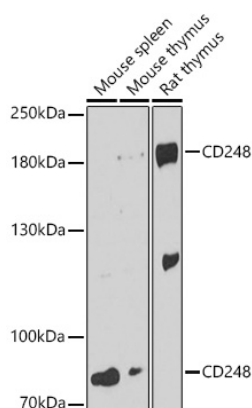
Affinity purification

Storage

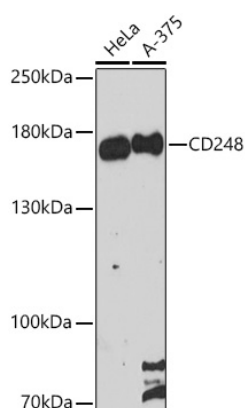
Store at -20°C. Avoid freeze / thaw cycles.

Buffer: PBS with 0.01% thimerosal, 50% glycerol, pH7.3.

Validation Data



Western blot analysis of various lysates using CD248 Rabbit pAb (A12703) at 1:3000 dilution.
Secondary antibody: HRP-conjugated Goat anti-Rabbit IgG (H+L) (AS014) at 1:10000 dilution.
Lysates/proteins: 25µg per lane.
Blocking buffer: 3% nonfat dry milk in TBST.
Detection: ECL Enhanced Kit (RM00021).
Exposure time: 90s.



Western blot analysis of various lysates using CD248 Rabbit pAb (A12703) at 1:3000 dilution.
Secondary antibody: HRP-conjugated Goat anti-Rabbit IgG (H+L) (AS014) at 1:10000 dilution.
Lysates/proteins: 25µg per lane.
Blocking buffer: 3% nonfat dry milk in TBST.
Detection: ECL Enhanced Kit (RM00021).
Exposure time: 90s.