

A12768

Leader in Biomolecular Solutions for Life Science



## PEBP1 Rabbit mAb

Catalog No.: A12768

Recombinant

### Basic Information

#### Observed MW

21kDa

#### Calculated MW

21kDa

#### Category

SMab Recombinant Monoclonal  
Antibody

#### Applications

WB,ELISA

#### Cross-Reactivity

Human,Mouse,Rat

#### CloneNo number

ARC0704

### Background

This gene encodes a member of the phosphatidylethanolamine-binding family of proteins and has been shown to modulate multiple signaling pathways, including the MAP kinase (MAPK), NF-kappa B, and glycogen synthase kinase-3 (GSK-3) signaling pathways. The encoded protein can be further processed to form a smaller cleavage product, hippocampal cholinergic neurostimulating peptide (HCNP), which may be involved in neural development. This gene has been implicated in numerous human cancers and may act as a metastasis suppressor gene. Multiple pseudogenes of this gene have been identified in the genome.

### Recommended Dilutions

**WB** 1:500 - 1:2000

**ELISA** Recommended starting concentration is 1 µg/mL. Please optimize the concentration based on your specific assay requirements.

### Immunogen Information

#### Gene ID

5037

#### Swiss Prot

P30086

#### Immunogen

A synthetic peptide corresponding to a sequence within amino acids 1-100 of human PEBP1 (P30086).

#### Synonyms

PBP; HCNP; PEBP; RKIP; HCNPPp; PEBP-1; HEL-210; HEL-S-34; HEL-S-96; PEBP1

### Contact

 [www.abclonal.com](http://www.abclonal.com)

### Product Information

#### Source

Rabbit

#### Isotype

IgG

#### Purification

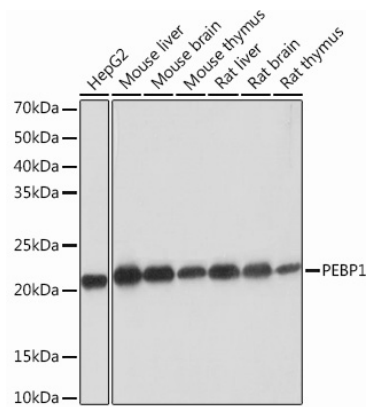
Affinity purification

#### Storage

Store at -20°C. Avoid freeze / thaw cycles.

Buffer: PBS with 0.02% sodium azide,0.05% BSA,50% glycerol,pH7.3.

## Validation Data



Western blot analysis of various lysates using PEBP1 Rabbit mAb (A12768) at 1 : 1000 dilution.

Secondary antibody: HRP-conjugated Goat anti-Rabbit IgG (H+L) (AS014) at 1:10000 dilution.

Lysates/proteins: 25µg per lane.

Blocking buffer: 3% nonfat dry milk in TBST.

Detection: ECL Basic Kit (RM00020).

Exposure time: 10s.