

A12822

Leader in Biomolecular Solutions for Life Science



TCL1B Rabbit pAb

Catalog No.: A12822

Basic Information

Observed MW

16kDa

Calculated MW

15kDa

Category

Polyclonal Antibody

Applications

WB, ELISA

Cross-Reactivity

Human, Mouse, Rat

Background

Enables protein kinase binding activity and protein serine/threonine kinase activator activity. Involved in positive regulation of peptidyl-serine phosphorylation and positive regulation of protein serine/threonine kinase activity. Part of protein-containing complex.

Recommended Dilutions

WB 1:500 - 1:1000

ELISA Recommended starting concentration is 1 µg/mL. Please optimize the concentration based on your specific assay requirements.

Immunogen Information

Gene ID

9623

Swiss Prot

O95988

Immunogen

Recombinant protein (or fragment). This information is considered to be commercially sensitive.

Synonyms

TML1; SYN-1; TCL1B

Contact



www.abclonal.com

Product Information

Source

Rabbit

Isotype

IgG

Purification

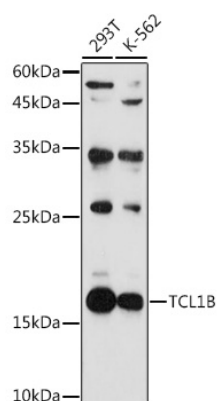
Affinity purification

Storage

Store at -20°C. Avoid freeze / thaw cycles.

Buffer: PBS with 0.01% thimerosal, 50% glycerol, pH 7.3.

Validation Data



Western blot analysis of various lysates using TCL1B Rabbit pAb (A12822) at 1:1000 dilution.

Secondary antibody: HRP-conjugated Goat anti-Rabbit IgG (H+L) (AS014) at 1:10000 dilution.

Lysates/proteins: 25µg per lane.

Blocking buffer: 3% nonfat dry milk in TBST.

Detection: ECL Basic Kit (RM00020).

Exposure time: 90s.