

A12850

Leader in Biomolecular Solutions for Life Science



STYXL1 Rabbit pAb

Catalog No.: A12850

Basic Information

Observed MW

36kDa

Calculated MW

36kDa

Category

Polyclonal Antibody

Applications

WB,ELISA

Cross-Reactivity

Human,Mouse

Background

Enables protein phosphatase binding activity; protein phosphatase inhibitor activity; and pseudophosphatase activity. Involved in several processes, including negative regulation of phosphoprotein phosphatase activity; negative regulation of stress granule assembly; and positive regulation of intrinsic apoptotic signaling pathway. Located in mitochondrion.

Recommended Dilutions

WB 1:500 - 1:2000

ELISA Recommended starting concentration is 1 µg/mL. Please optimize the concentration based on your specific assay requirements.

Immunogen Information

Gene ID

51657

Swiss Prot

Q9Y6J8

Immunogen

Recombinant protein (or fragment). This information is considered to be commercially sensitive.

Synonyms

DUSP24; MKSTYX; MK-STYX; STYXL1

Contact



www.abclonal.com

Product Information

Source

Rabbit

Isotype

IgG

Purification

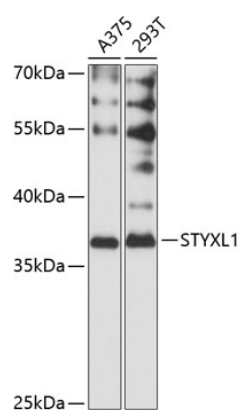
Affinity purification

Storage

Store at -20°C. Avoid freeze / thaw cycles.

Buffer: PBS with 0.01% thimerosal, 50% glycerol, pH7.3.

Validation Data



Western blot analysis of various lysates using STYXL1 Rabbit pAb (A12850) at 1:3000 dilution.

Secondary antibody: HRP-conjugated Goat anti-Rabbit IgG (H+L) (AS014) at 1:10000 dilution.

Lysates/proteins: 25µg per lane.

Blocking buffer: 3% nonfat dry milk in TBST.

Detection: ECL Basic Kit (RM00020).

Exposure time: 60s.