

A12935

Leader in Biomolecular Solutions for Life Science



## EDG1/HEXIM1 Rabbit pAb

Catalog No.: A12935

3 Publications

### Basic Information

#### Observed MW

43kDa

#### Calculated MW

43kDa

#### Category

Polyclonal Antibody

#### Applications

WB, ELISA

#### Cross-Reactivity

Human, Mouse

### Background

The protein encoded by this gene is structurally similar to G protein-coupled receptors and is highly expressed in endothelial cells. It binds the ligand sphingosine-1-phosphate with high affinity and high specificity, and suggested to be involved in the processes that regulate the differentiation of endothelial cells. Activation of this receptor induces cell-cell adhesion. Alternative splicing results in multiple transcript variants.

### Recommended Dilutions

**WB** 1:500 - 1:2000

**ELISA** Recommended starting concentration is 1 µg/mL. Please optimize the concentration based on your specific assay requirements.

### Immunogen Information

**Gene ID**  
1901

**Swiss Prot**  
P21453

#### Immunogen

Recombinant protein (or fragment). This information is considered to be commercially sensitive.

#### Synonyms

EDG1; S1P1; CD363; ECGF1; EDG-1; CHEDG1; D1S3362; EDG1/HEXIM1

### Contact



[www.abclonal.com](http://www.abclonal.com)

### Product Information

**Source**  
Rabbit

**Isotype**  
IgG

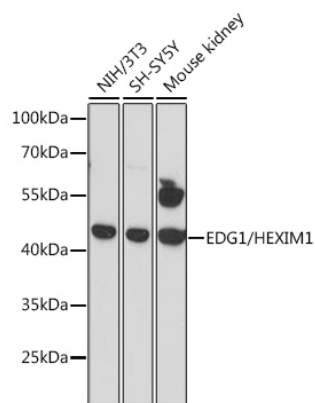
**Purification**  
Affinity purification

#### Storage

Store at -20°C. Avoid freeze / thaw cycles.

Buffer: PBS containing 50% glycerol, preserved with proclin300 or sodium azide (as specified on the Certificate of Analysis), pH 7.3.

## Validation Data



Western blot analysis of various lysates using EDG1/HEXIM1 Rabbit pAb (A12935) at 1:3000 dilution.  
Secondary antibody: HRP-conjugated Goat anti-Rabbit IgG (H+L) (AS014) at 1:10000 dilution.  
Lysates/proteins: 25µg per lane.  
Blocking buffer: 3% nonfat dry milk in TBST.  
Detection: ECL Basic Kit (RM00020).  
Exposure time: 90s.