

A12994

Leader in Biomolecular Solutions for Life Science



GBP2 Rabbit pAb

Catalog No.: A12994

3 Publications

Basic Information

Observed MW

67kDa/70kDa

Calculated MW

67kDa

Category

Polyclonal Antibody

Applications

WB,IF/ICC,ELISA

Cross-Reactivity

Human,Mouse

Background

This gene belongs to the guanine-binding protein (GBP) family, which includes interferon-induced proteins that can bind to guanine nucleotides (GMP, GDP and GTP). The encoded protein is a GTPase which hydrolyzes GTP, predominantly to GDP. The protein may play a role as a marker of squamous cell carcinomas.

Recommended Dilutions

WB 1:500 - 1:2000

IF/ICC 1:50 - 1:200

ELISA Recommended starting concentration is 1 µg/mL. Please optimize the concentration based on your specific assay requirements.

Immunogen Information

Gene ID

2634

Swiss Prot

P32456

Immunogen

Recombinant fusion protein containing a sequence corresponding to amino acids 410-520 of human GBP2 (NP_004111.2).

Synonyms

GBP2

Contact



www.abclonal.com

Product Information

Source

Rabbit

Isotype

IgG

Purification

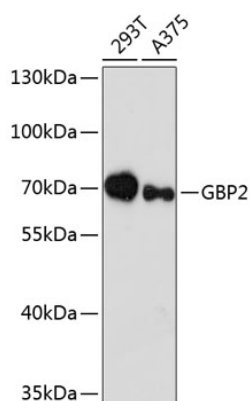
Affinity purification

Storage

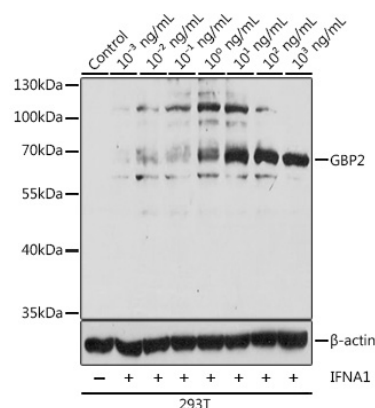
Store at -20°C. Avoid freeze / thaw cycles.

Buffer: PBS with 0.01% thimerosal, 50% glycerol, pH7.3.

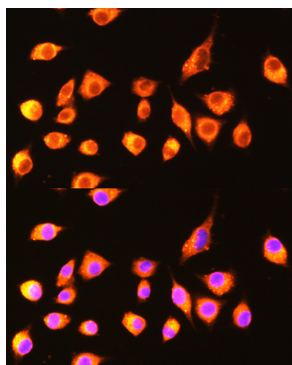
Validation Data



Western blot analysis of various lysates using GBP2 Rabbit pAb (A12994) at 1:3000 dilution. Secondary antibody: HRP-conjugated Goat anti-Rabbit IgG (H+L) (AS014) at 1:10000 dilution. Lysates/proteins: 25µg per lane. Blocking buffer: 3% nonfat dry milk in TBST. Detection: ECL Enhanced Kit (RM00021). Exposure time: 90s.



Western blot analysis of lysates from 293T cells, using GBP2 Rabbit pAb (A12994) at 1:1000 dilution. 293T cells treated with different concentrations of IFNA1. Secondary antibody: HRP-conjugated Goat anti-Rabbit IgG (H+L) (AS014) at 1:10000 dilution. Lysates/proteins: 25µg per lane. Blocking buffer: 3% BSA. Detection: ECL Basic Kit (RM00020). Exposure time: 10s.



Immunofluorescence analysis of L929 cells using GBP2 Rabbit pAb (A12994) at dilution of 1:100 (40x lens). Secondary antibody: Cy3-conjugated Goat anti-Rabbit IgG (H+L) (AS007) at 1:500 dilution. Blue: DAPI for nuclear staining.