

A13032

Leader in Biomolecular Solutions for Life Science



MYO1E Rabbit pAb

Catalog No.: A13032

1 Publications

Basic Information

Observed MW

127kDa

Calculated MW

127kDa

Category

Polyclonal Antibody

Applications

WB, ELISA

Cross-Reactivity

Human

Background

This gene encodes a member of the nonmuscle class I myosins which are a subgroup of the unconventional myosin protein family. The unconventional myosin proteins function as actin-based molecular motors. Class I myosins are characterized by a head (motor) domain, a regulatory domain and a either a short or long tail domain. Among the class I myosins, this protein is distinguished by a long tail domain that is involved in crosslinking actin filaments. This protein localizes to the cytoplasm and may be involved in intracellular movement and membrane trafficking. Mutations in this gene are the cause of focal segmental glomerulosclerosis-6. This gene has been referred to as myosin IC in the literature but is distinct from the myosin IC gene located on chromosome 17.

Recommended Dilutions

WB 1:1000 - 1:2000

ELISA Recommended starting concentration is 1 µg/mL. Please optimize the concentration based on your specific assay requirements.

Immunogen Information

Gene ID

4643

Swiss Prot

Q12965

Immunogen

Recombinant fusion protein containing a sequence corresponding to amino acids 809-1108 of human MYO1E (NP_004989.2).

Synonyms

FSGS6; MYO1C; HuncM-IC; MYO1E

Contact

 www.abclonal.com

Product Information

Source

Rabbit

Isotype

IgG

Purification

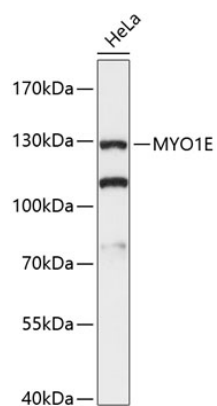
Affinity purification

Storage

Store at -20°C. Avoid freeze / thaw cycles.

Buffer: PBS with 0.01% thimerosal, 50% glycerol, pH7.3.

Validation Data



Western blot analysis of lysates from HeLa cells, using MYO1E Rabbit pAb (A13032) at 1:3000 dilution.

Secondary antibody: HRP-conjugated Goat anti-Rabbit IgG (H+L) (AS014) at 1:10000 dilution.

Lysates/proteins: 25µg per lane.

Blocking buffer: 3% nonfat dry milk in TBST.

Detection: ECL Basic Kit (RM00020).

Exposure time: 60s.