

A13065

Leader in Biomolecular Solutions for Life Science



PTDSS1 Rabbit pAb

Catalog No.: A13065

2 Publications

Basic Information

Observed MW

55kDa

Calculated MW

56kDa

Category

Polyclonal Antibody

Applications

WB, ELISA

Cross-Reactivity

Human

Background

The protein encoded by this gene catalyzes the formation of phosphatidylserine from either phosphatidylcholine or phosphatidylethanolamine. Phosphatidylserine localizes to the mitochondria-associated membrane of the endoplasmic reticulum, where it serves a structural role as well as a signaling role. Defects in this gene are a cause of Lenz-Majewski hyperostotic dwarfism. Two transcript variants encoding different isoforms have been found for this gene.

Recommended Dilutions

WB 1:500 - 1:2000

ELISA Recommended starting concentration is 1 µg/mL. Please optimize the concentration based on your specific assay requirements.

Immunogen Information

Gene ID

9791

Swiss Prot

P48651

Immunogen

Recombinant protein (or fragment). This information is considered to be commercially sensitive.

Synonyms

LMHD; PSS1; PSSA; PTDSS1

Contact



www.abclonal.com

Product Information

Source

Rabbit

Isotype

IgG

Purification

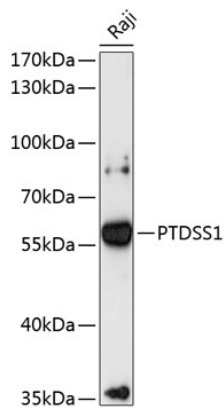
Affinity purification

Storage

Store at -20°C. Avoid freeze / thaw cycles.

Buffer: PBS with 0.01% thimerosal, 50% glycerol, pH 7.3.

Validation Data



Western blot analysis of lysates from Raji cells, using PTDS1 Rabbit pAb (A13065) at 1:3000 dilution.

Secondary antibody: HRP-conjugated Goat anti-Rabbit IgG (H+L) (AS014) at 1:10000 dilution.

Lysates/proteins: 25µg per lane.

Blocking buffer: 3% nonfat dry milk in TBST.

Detection: ECL Enhanced Kit (RM00021).

Exposure time: 90s.