

A13071

Leader in Biomolecular Solutions for Life Science



UBAC1 Rabbit pAb

Catalog No.: A13071

Basic Information

Observed MW

45kDa

Calculated MW

45kDa

Category

Polyclonal Antibody

Applications

WB,ELISA

Cross-Reactivity

Human,Mouse,Rat

Background

Predicted to be involved in protein ubiquitination. Located in Golgi apparatus; cytosol; and plasma membrane.

Recommended Dilutions

WB 1:500 - 1:2000

ELISA Recommended starting concentration is 1 µg/mL. Please optimize the concentration based on your specific assay requirements.

Immunogen Information

Gene ID

10422

Swiss Prot

Q9BSL1

Immunogen

Recombinant protein (or fragment). This information is considered to be commercially sensitive.

Synonyms

KPC2; GBDR1; UBADC1; UBAC1

Contact

 www.abclonal.com

Product Information

Source

Rabbit

Isotype

IgG

Purification

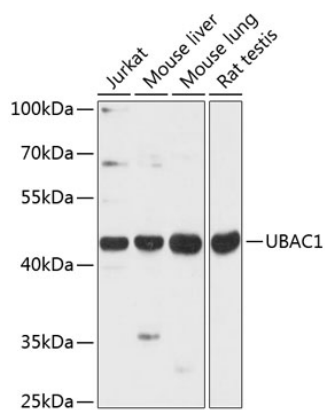
Affinity purification

Storage

Store at -20°C. Avoid freeze / thaw cycles.

Buffer: PBS with 0.01% thimerosal, 50% glycerol, pH7.3.

Validation Data



Western blot analysis of various lysates using UBAC1 Rabbit pAb (A13071) at 1:3000 dilution.
Secondary antibody: HRP-conjugated Goat anti-Rabbit IgG (H+L) (AS014) at 1:10000 dilution.
Lysates/proteins: 25µg per lane.
Blocking buffer: 3% nonfat dry milk in TBST.
Detection: ECL Basic Kit (RM00020).
Exposure time: 30s.