

A13116

Leader in Biomolecular Solutions for Life Science



CWC22 Rabbit pAb

Catalog No.: A13116

Basic Information

Observed MW

110kDa

Calculated MW

105kDa

Category

Polyclonal Antibody

Applications

WB, ELISA

Cross-Reactivity

Mouse

Background

Enables RNA binding activity. Involved in mRNA splicing, via spliceosome. Located in cytosol and nuclear speck. Part of U2-type catalytic step 1 spliceosome; U2-type catalytic step 2 spliceosome; and U2-type precatalytic spliceosome.

Recommended Dilutions

WB 1:1000 - 1:2000

ELISA Recommended starting concentration is 1 µg/mL. Please optimize the concentration based on your specific assay requirements.

Immunogen Information

Gene ID

57703

Swiss Prot

Q9HCG8

Immunogen

Recombinant protein (or fragment). This information is considered to be commercially sensitive.

Synonyms

NCM; fSAPb; EIF4GL; CWC22

Contact



www.abclonal.com

Product Information

Source

Rabbit

Isotype

IgG

Purification

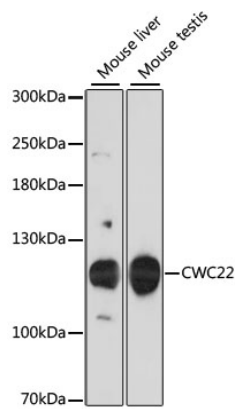
Affinity purification

Storage

Store at -20°C. Avoid freeze / thaw cycles.

Buffer: PBS with 0.01% thimerosal, 50% glycerol, pH 7.3.

Validation Data



Western blot analysis of various lysates using CWC22 Rabbit pAb (A13116) at 1:3000 dilution.

Secondary antibody: HRP-conjugated Goat anti-Rabbit IgG (H+L) (AS014) at 1:10000 dilution.

Lysates/proteins: 25µg per lane.

Blocking buffer: 3% nonfat dry milk in TBST.

Detection: ECL Basic Kit (RM00020).

Exposure time: 30s.