

A13272

Leader in Biomolecular Solutions for Life Science



# CTCF Rabbit pAb

Catalog No.: A13272

1 Publications

## Basic Information

### Observed MW

140kDa

### Calculated MW

83kDa

### Category

Polyclonal Antibody

### Applications

WB,IHC-P,IF/ICC,IP,ChIP,ELISA

### Cross-Reactivity

Human,Mouse,Rat

## Background

This gene is a member of the BORIS + CTCF gene family and encodes a transcriptional regulator protein with 11 highly conserved zinc finger (ZF) domains. This nuclear protein is able to use different combinations of the ZF domains to bind different DNA target sequences and proteins. Depending upon the context of the site, the protein can bind a histone acetyltransferase (HAT)-containing complex and function as a transcriptional activator or bind a histone deacetylase (HDAC)-containing complex and function as a transcriptional repressor. If the protein is bound to a transcriptional insulator element, it can block communication between enhancers and upstream promoters, thereby regulating imprinted expression. Mutations in this gene have been associated with invasive breast cancers, prostate cancers, and Wilms' tumors. Alternatively spliced transcript variants encoding different isoforms have been found for this gene.

## Recommended Dilutions

WB 1:1000 - 1:2000

IHC-P 1:50 - 1:200

IF/ICC 1:50 - 1:200

IP 0.5µg-4µg antibody for  
200µg-400µg extracts  
of whole cellsELISA Recommended starting  
concentration is 1  
µg/mL. Please optimize  
the concentration  
based on your specific  
assay requirements.ChIP 3µg antibody for  
10µg-15µg of  
Chromatin

## Immunogen Information

### Gene ID

10664

### Swiss Prot

P49711

### Immunogen

Recombinant protein (or fragment). This information is considered to be commercially sensitive.

### Synonyms

MRD21; FAP108; CFAP108; CTCF

## Product Information

### Source

Rabbit

### Isotype

IgG

### Purification

Affinity purification

### Storage

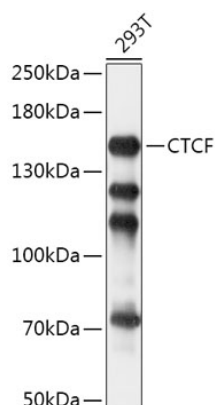
Store at -20°C. Avoid freeze / thaw cycles.

Buffer: PBS with 0.09% Sodium azide, 50% glycerol, pH7.3.

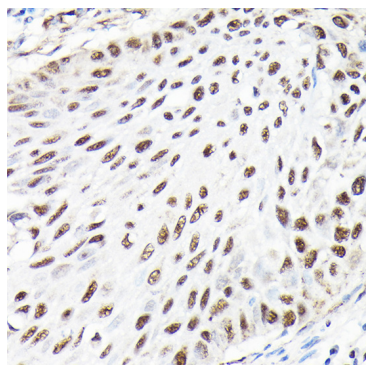
## Contact

[www.abclonal.com](http://www.abclonal.com)

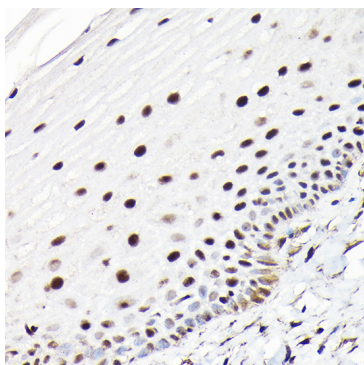
## Validation Data



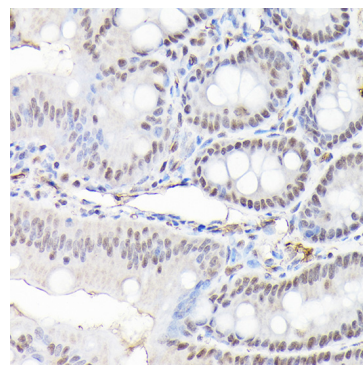
Western blot analysis of lysates from 293T cells, using CTCF Rabbit pAb (A13272) at 1:1000 dilution.  
Secondary antibody: HRP-conjugated Goat anti-Rabbit IgG (H+L) (AS014) at 1:10000 dilution.  
Lysates/proteins: 25µg per lane.  
Blocking buffer: 3% nonfat dry milk in TBST.  
Detection: ECL Basic Kit (RM00020).  
Exposure time: 5s.



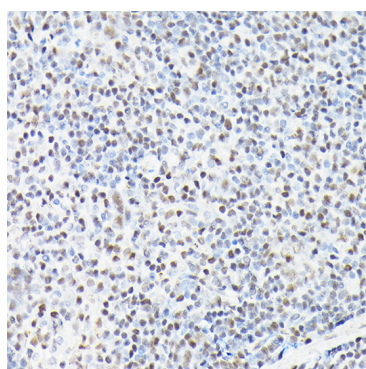
Immunohistochemistry analysis of paraffin-embedded Human lung cancer using CTCF Rabbit pAb (A13272) at dilution of 1:100 (40x lens). High pressure antigen retrieval performed with 0.01M Citrate buffer (pH 6.0) prior to IHC staining.



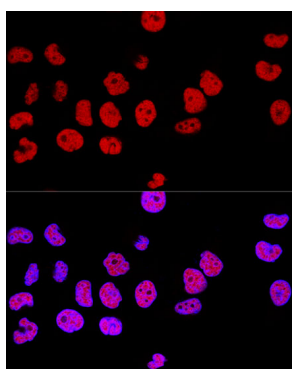
Immunohistochemistry analysis of paraffin-embedded Human normal cervix using CTCF Rabbit pAb (A13272) at dilution of 1:100 (40x lens). High pressure antigen retrieval performed with 0.01M Citrate buffer (pH 6.0) prior to IHC staining.



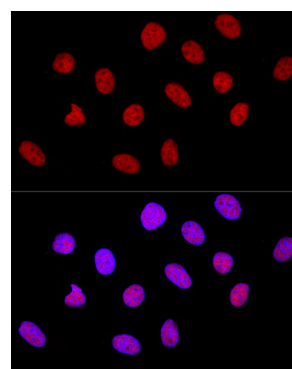
Immunohistochemistry analysis of paraffin-embedded Mouse colon using CTCF Rabbit pAb (A13272) at dilution of 1:100 (40x lens). High pressure antigen retrieval performed with 0.01M Citrate buffer (pH 6.0) prior to IHC staining.



Immunohistochemistry analysis of paraffin-embedded Mouse spleen using CTCF Rabbit pAb (A13272) at dilution of 1:100 (40x lens). High pressure antigen retrieval performed with 0.01M Citrate buffer (pH 6.0) prior to IHC staining.

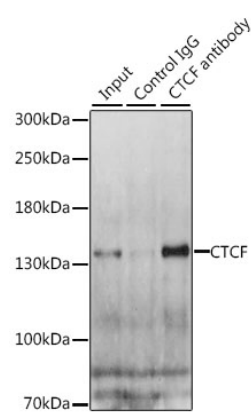


Confocal immunofluorescence analysis of HeLa cells using CTCF Rabbit pAb (A13272) at dilution of 1:100. Blue: DAPI for nuclear staining.

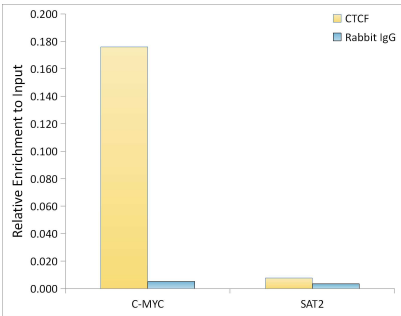


Confocal immunofluorescence analysis of U-2 OS cells using CTCF Rabbit pAb (A13272) at dilution of 1:100. Blue: DAPI for nuclear staining.

# Validation Data



Immunoprecipitation analysis of 200 µg extracts of HeLa cells, using 3 µg CTCF antibody (A13272). Western blot was performed from the immunoprecipitate using CTCF antibody (A13272) at a dilution of 1:1000.



Chromatin immunoprecipitation analysis of extracts of 293T cells, using CTCF antibody (A13272) and rabbit IgG. The amount of immunoprecipitated DNA was checked by quantitative PCR. Histogram was constructed by the ratios of the immunoprecipitated DNA to the input.