

A13508

Leader in Biomolecular Solutions for Life Science



## LIPC Rabbit pAb

Catalog No.: A13508

### Basic Information

#### Observed MW

Refer to figures

#### Calculated MW

56kDa

#### Category

Polyclonal Antibody

#### Applications

WB,IF/ICC,ELISA

#### Cross-Reactivity

Human

### Background

Enables phospholipase A1 activity and triglyceride lipase activity. Involved in several processes, including lipid homeostasis; plasma lipoprotein particle remodeling; and triglyceride catabolic process. Located in extracellular space. Implicated in several diseases, including Alzheimer's disease; coronary artery disease; familial combined hyperlipidemia; peripheral vascular disease; and type 2 diabetes mellitus. Biomarker of hyperinsulinism; obesity; and type 1 diabetes mellitus.

### Recommended Dilutions

**WB** 1:500 - 1:2000

**IF/ICC** 1:50 - 1:200

**ELISA** Recommended starting concentration is 1 µg/mL. Please optimize the concentration based on your specific assay requirements.

### Immunogen Information

#### Gene ID

3990

#### Swiss Prot

P11150

#### Immunogen

Recombinant protein (or fragment). This information is considered to be commercially sensitive.

#### Synonyms

HL; HTGL; LIPH; HDLCQ12; LIPC

### Contact



[www.abclonal.com](http://www.abclonal.com)

### Product Information

#### Source

Rabbit

#### Isotype

IgG

#### Purification

Affinity purification

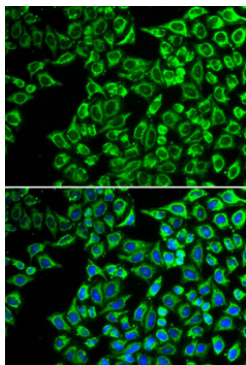
#### Storage

Store at -20°C. Avoid freeze / thaw cycles.

Buffer: PBS with 0.02% sodium azide, 50% glycerol, pH 7.3.

## Validation Data

---



Immunofluorescence analysis of A549 cells using LIPC Rabbit pAb (A13508). Secondary antibody: Cy3-conjugated Goat anti-Rabbit IgG (H+L) (AS007) at 1:500 dilution. Blue: DAPI for nuclear staining.