

A13542

Leader in Biomolecular Solutions for Life Science



RPL11 Rabbit pAb

Catalog No.: A13542

Basic Information

Observed MW

Calculated MW

20kDa

Category

Polyclonal Antibody

Applications

IF/ICC, ELISA

Cross-Reactivity

Human

Background

Ribosomes, the organelles that catalyze protein synthesis, consist of a small 40S subunit and a large 60S subunit. Together these subunits are composed of 4 RNA species and approximately 80 structurally distinct proteins. This gene encodes a ribosomal protein that is a component of the 60S subunit. The protein belongs to the L5P family of ribosomal proteins. It is located in the cytoplasm. The protein probably associates with the 5S rRNA. Alternatively spliced transcript variants encoding different isoforms have been found for this gene. As is typical for genes encoding ribosomal proteins, there are multiple processed pseudogenes of this gene dispersed through the genome.

Recommended Dilutions

IF/ICC 1:50 - 1:200

ELISA Recommended starting concentration is 1 µg/mL. Please optimize the concentration based on your specific assay requirements.

Immunogen Information

Gene ID

6135

Swiss Prot

P62913

Immunogen

Recombinant protein (or fragment). This information is considered to be commercially sensitive.

Synonyms

L11; uL5; DBA7; GIG34; RPL11

Contact

 www.abclonal.com

Product Information

Source

Rabbit

Isotype

IgG

Purification

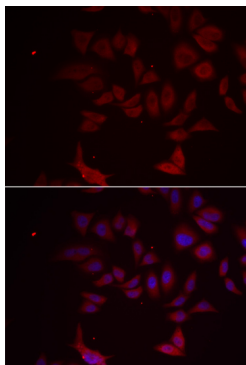
Affinity purification

Storage

Store at -20°C. Avoid freeze / thaw cycles.

Buffer: PBS with 0.02% sodium azide, 50% glycerol, pH7.3.

Validation Data



Immunofluorescence analysis of MCF-7 cells using RPL11 Rabbit pAb (A13542). Secondary antibody: Cy3-conjugated Goat anti-Rabbit IgG (H+L) (AS007) at 1:500 dilution. Blue: DAPI for nuclear staining.