

A13643

Leader in Biomolecular Solutions for Life Science



C11orf30 Rabbit pAb

Catalog No.: A13643

Basic Information

Observed MW

Refer to figures

Calculated MW

141kDa

Category

Polyclonal Antibody

Applications

WB,IF/ICC,ELISA

Cross-Reactivity

Human,Mouse,Rat

Background

Predicted to enable identical protein binding activity. Predicted to be involved in DNA repair; chromatin organization; and regulation of transcription, DNA-templated. Located in nucleoplasm.

Recommended Dilutions

WB 1:500 - 1:2000

IF/ICC 1:50 - 1:200

ELISA Recommended starting concentration is 1 µg/mL. Please optimize the concentration based on your specific assay requirements.

Immunogen Information

Gene ID

56946

Swiss Prot

Q7Z589

Immunogen

Recombinant protein (or fragment). This information is considered to be commercially sensitive.

Synonyms

GL002; C11orf30

Contact

 www.abclonal.com

Product Information

Source

Rabbit

Isotype

IgG

Purification

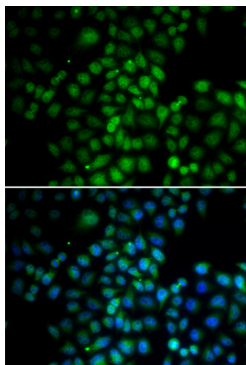
Affinity purification

Storage

Store at -20°C. Avoid freeze / thaw cycles.

Buffer: PBS with 0.02% sodium azide, 50% glycerol, pH7.3.

Validation Data



Immunofluorescence analysis of HeLa cells using C11orf30 Rabbit pAb (A13643). Secondary antibody: Cy3-conjugated Goat anti-Rabbit IgG (H+L) (AS007) at 1:500 dilution. Blue: DAPI for nuclear staining.