

A13705

Leader in Biomolecular Solutions for Life Science



RND1 Rabbit pAb

Catalog No.: A13705

Basic Information

Observed MW

26kDa

Calculated MW

26kDa

Category

Polyclonal Antibody

Applications

WB,IF/ICC,ELISA

Cross-Reactivity

Mouse,Rat

Background

This gene encodes a protein that belongs to the Rho GTPase family. Members of this family regulate the organization of the actin cytoskeleton in response to extracellular growth factors. A similar protein in rat interacts with a microtubule regulator to control axon extension.

Recommended Dilutions

WB 1:500 - 1:2000

IF/ICC 1:50 - 1:200

ELISA Recommended starting concentration is 1 µg/mL. Please optimize the concentration based on your specific assay requirements.

Immunogen Information

Gene ID

27289

Swiss Prot

Q92730

Immunogen

A synthetic peptide corresponding to a sequence within amino acids 133-232 of human RND1 (NP_055285.1).

Synonyms

ARHS; RHO6; RHOS; RND1

Contact



www.abclonal.com

Product Information

Source

Rabbit

Isotype

IgG

Purification

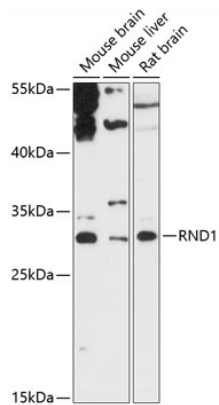
Affinity purification

Storage

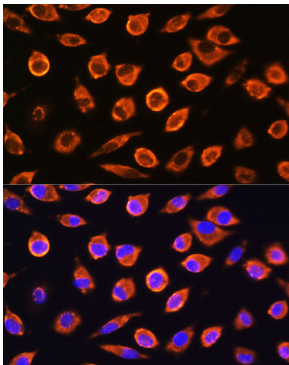
Store at -20°C. Avoid freeze / thaw cycles.

Buffer: PBS with 0.01% thimerosal, 50% glycerol, pH7.3.

Validation Data



Western blot analysis of various lysates using RND1 Rabbit pAb (A13705) at 1:3000 dilution.



Immunofluorescence analysis of L929 cells using RND1 Rabbit pAb (A13705) at dilution of 1:100. Secondary antibody: Cy3-conjugated Goat anti-Rabbit IgG (H+L) (AS007) at 1:500 dilution. Blue: DAPI for nuclear staining.