

A13711

Leader in Biomolecular Solutions for Life Science



# KCNIP3 Rabbit pAb

Catalog No.: A13711

## Basic Information

### Observed MW

29kDa

### Calculated MW

29kDa

### Category

Polyclonal Antibody

### Applications

WB, ELISA

### Cross-Reactivity

Rat

## Background

This gene encodes a member of the family of voltage-gated potassium (Kv) channel-interacting proteins, which belong to the recoverin branch of the EF-hand superfamily. Members of this family are small calcium binding proteins containing EF-hand-like domains. They are integral subunit components of native Kv4 channel complexes that may regulate A-type currents, and hence neuronal excitability, in response to changes in intracellular calcium. The encoded protein also functions as a calcium-regulated transcriptional repressor, and interacts with presenilins. Alternatively spliced transcript variants encoding different isoforms have been described.

## Recommended Dilutions

**WB** 1:500 - 1:2000

**ELISA** Recommended starting concentration is 1 µg/mL. Please optimize the concentration based on your specific assay requirements.

## Immunogen Information

### Gene ID

30818

### Swiss Prot

Q9Y2W7

### Immunogen

A synthetic peptide corresponding to a sequence within amino acids 1-100 of human KCNIP3 (NP\_038462.1).

### Synonyms

CSEN; DREAM; KCHIP3; KCNIP3

## Contact

 [www.abclonal.com](http://www.abclonal.com)

## Product Information

### Source

Rabbit

### Isotype

IgG

### Purification

Affinity purification

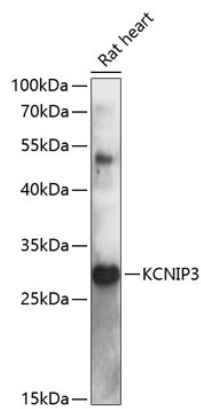
### Storage

Store at -20°C. Avoid freeze / thaw cycles.

Buffer: PBS with 0.01% thimerosal, 50% glycerol, pH7.3.

## Validation Data

---



Western blot analysis of lysates from rat heart, using KCNIP3 Rabbit pAb (A13711) at 1:3000 dilution.

Secondary antibody: HRP-conjugated Goat anti-Rabbit IgG (H+L) (AS014) at 1:10000 dilution.

Lysates/proteins: 25µg per lane.

Blocking buffer: 3% nonfat dry milk in TBST.

Detection: ECL Basic Kit (RM00020).

Exposure time: 90s.