

A1373

Leader in Biomolecular Solutions for Life Science



## CYP17A1 Rabbit pAb

Catalog No.: A1373

9 Publications

### Basic Information

#### Observed MW

57kDa

#### Calculated MW

57kDa

#### Category

Polyclonal Antibody

#### Applications

WB, ELISA

#### Cross-Reactivity

Human, Mouse, Rat

### Background

This gene encodes a member of the cytochrome P450 superfamily of enzymes. The cytochrome P450 proteins are monooxygenases which catalyze many reactions involved in drug metabolism and synthesis of cholesterol, steroids and other lipids. This protein localizes to the endoplasmic reticulum. It has both 17 $\alpha$ -hydroxylase and 17,20-lyase activities and is a key enzyme in the steroidogenic pathway that produces progestins, mineralocorticoids, glucocorticoids, androgens, and estrogens. Mutations in this gene are associated with isolated steroid-17  $\alpha$ -hydroxylase deficiency, 17- $\alpha$ -hydroxylase/17,20-lyase deficiency, pseudohermaphroditism, and adrenal hyperplasia.

### Recommended Dilutions

**WB** 1:500 - 1:2000

**ELISA** Recommended starting concentration is 1  $\mu$ g/mL. Please optimize the concentration based on your specific assay requirements.

### Immunogen Information

#### Gene ID

1586

#### Swiss Prot

P05093

#### Immunogen

Recombinant fusion protein containing a sequence corresponding to amino acids 209-508 of human CYP17A1 (NP\_000093.1).

#### Synonyms

CPT7; CYP17; S17AH; P450C17; CYP17A1

### Contact



[www.abclonal.com](http://www.abclonal.com)

### Product Information

#### Source

Rabbit

#### Isotype

IgG

#### Purification

Affinity purification

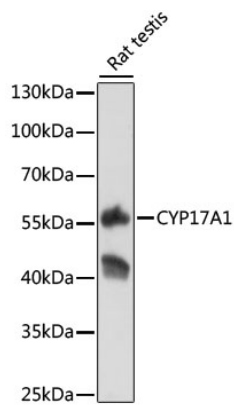
#### Storage

Store at -20°C. Avoid freeze / thaw cycles.

Buffer: PBS with 0.02% sodium azide, 50% glycerol, pH7.3.

## Validation Data

---



Western blot analysis of lysates from rat testis, using CYP17A1 Rabbit pAb (A1373) at 1:500 dilution.

Secondary antibody: HRP-conjugated Goat anti-Rabbit IgG (H+L) (AS014) at 1:10000 dilution.

Lysates/proteins: 25µg per lane.

Blocking buffer: 3% nonfat dry milk in TBST.

Detection: ECL Basic Kit (RM00020).

Exposure time: 10s.