

A13915

Leader in Biomolecular Solutions for Life Science



## VAMP8 Rabbit pAb

Catalog No.: A13915

2 Publications

### Basic Information

#### Observed MW

11kDa

#### Calculated MW

11kDa

#### Category

Polyclonal Antibody

#### Applications

WB, ELISA

#### Cross-Reactivity

Human, Mouse, Rat

### Background

This gene encodes an integral membrane protein that belongs to the synaptobrevin/vesicle-associated membrane protein subfamily of soluble N-ethylmaleimide-sensitive factor attachment protein receptors (SNAREs). The encoded protein is involved in the fusion of synaptic vesicles with the presynaptic membrane.

### Recommended Dilutions

**WB** 1:500 - 1:2000

**ELISA** Recommended starting concentration is 1 µg/mL. Please optimize the concentration based on your specific assay requirements.

### Immunogen Information

#### Gene ID

8673

#### Swiss Prot

Q9BV40

#### Immunogen

Recombinant protein (or fragment). This information is considered to be commercially sensitive.

#### Synonyms

EDB; VAMP-8; VAMP8

### Contact



[www.abclonal.com](http://www.abclonal.com)

### Product Information

#### Source

Rabbit

#### Isotype

IgG

#### Purification

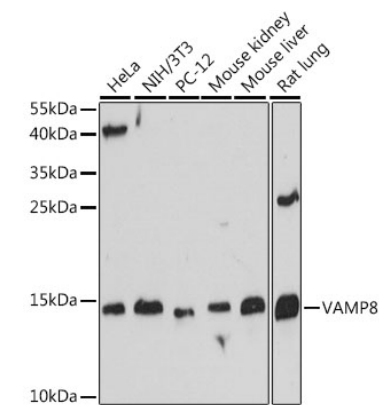
Affinity purification

#### Storage

Store at -20°C. Avoid freeze / thaw cycles.

Buffer: PBS with 0.01% thimerosal, 50% glycerol, pH 7.3.

## Validation Data



Western blot analysis of various lysates using VAMP8 Rabbit pAb (A13915) at 1:500 dilution.  
Secondary antibody: HRP-conjugated Goat anti-Rabbit IgG (H+L) (AS014) at 1:10000 dilution.  
Lysates/proteins: 25µg per lane.  
Blocking buffer: 3% nonfat dry milk in TBST.  
Detection: ECL Basic Kit (RM00020).  
Exposure time: 60s.