

A13931

Leader in Biomolecular Solutions for Life Science



MESDC2 Rabbit pAb

Catalog No.: A13931

Basic Information

Observed MW

26kDa

Calculated MW

26kDa

Category

Polyclonal Antibody

Applications

WB,ELISA

Cross-Reactivity

Human,Mouse

Background

Predicted to enable low-density lipoprotein particle receptor binding activity. Involved in ossification and protein folding. Located in endoplasmic reticulum. Implicated in osteogenesis imperfecta type 20.

Recommended Dilutions

WB 1:500 - 1:2000

ELISA Recommended starting concentration is 1 µg/mL. Please optimize the concentration based on your specific assay requirements.

Immunogen Information

Gene ID

23184

Swiss Prot

Q14696

Immunogen

Recombinant protein (or fragment). This information is considered to be commercially sensitive.

Synonyms

BOCA; OI20; MESDC2

Contact



www.abclonal.com

Product Information

Source

Rabbit

Isotype

IgG

Purification

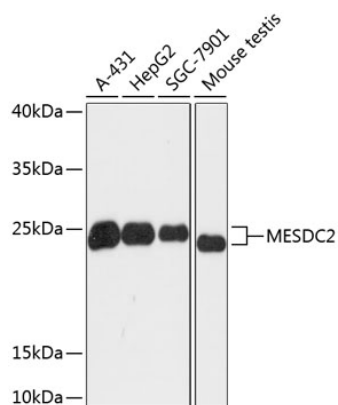
Affinity purification

Storage

Store at -20°C. Avoid freeze / thaw cycles.

Buffer: PBS with 0.01% thimerosal, 50% glycerol, pH7.3.

Validation Data



Western blot analysis of various lysates using MESDC2 Rabbit pAb (A13931) at 1:3000 dilution.
Secondary antibody: HRP-conjugated Goat anti-Rabbit IgG (H+L) (AS014) at 1:10000 dilution.
Lysates/proteins: 25µg per lane.
Blocking buffer: 3% nonfat dry milk in TBST.
Detection: ECL Basic Kit (RM00020).
Exposure time: 60s.