

A14053

Leader in Biomolecular Solutions for Life Science



PSMA5 Rabbit pAb

Catalog No.: A14053

Basic Information

Observed MW

26kDa

Calculated MW

26kDa

Category

Polyclonal Antibody

Applications

WB,IP,ELISA

Cross-Reactivity

Human,Mouse,Rat

Background

The proteasome is a multicatalytic proteinase complex with a highly ordered ring-shaped 20S core structure. The core structure is composed of 4 rings of 28 non-identical subunits; 2 rings are composed of 7 alpha subunits and 2 rings are composed of 7 beta subunits. Proteasomes are distributed throughout eukaryotic cells at a high concentration and cleave peptides in an ATP/ubiquitin-dependent process in a non-lysosomal pathway. An essential function of a modified proteasome, the immunoproteasome, is the processing of class I MHC peptides. This gene encodes a member of the peptidase T1A family, that is a 20S core alpha subunit. Multiple alternatively spliced transcript variants encoding two distinct isoforms have been found for this gene.

Recommended Dilutions

WB 1:500 - 1:2000

IP 0.5µg-4µg antibody for
200µg-400µg extracts
of whole cells

ELISA Recommended starting
concentration is 1
µg/mL. Please optimize
the concentration
based on your specific
assay requirements.

Immunogen Information

Gene ID

5686

Swiss Prot

P28066

Immunogen

Recombinant protein (or fragment). This information is considered to be commercially sensitive.

Synonyms

PSC5; ZETA; PSMA5

Product Information

Source

Rabbit

Isotype

IgG

Purification

Affinity purification

Storage

Store at -20°C. Avoid freeze / thaw cycles.

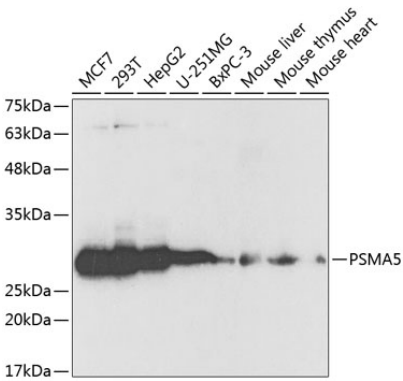
Buffer: PBS with 0.02% sodium azide, 50% glycerol, pH7.3.

Contact

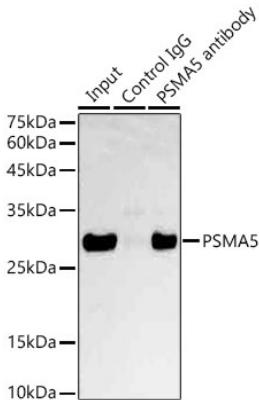


www.abclonal.com

Validation Data



Western blot analysis of various lysates using PSMA5 Rabbit pAb (A14053) at 1:1000 dilution.
Secondary antibody: HRP-conjugated Goat anti-Rabbit IgG (H+L) (AS014) at 1:10000 dilution.
Lysates/proteins: 25µg per lane.
Blocking buffer: 3% nonfat dry milk in TBST.



Immunoprecipitation analysis of 600 µg extracts of Mouse liver cells using 3 µg PSMA5 antibody (A14053). Western blot was performed from the immunoprecipitate using PSMA5 antibody (A14053) at a dilution of 1:1000.