

A14143

Leader in Biomolecular Solutions for Life Science



## PRDM11 Rabbit pAb

Catalog No.: A14143

### Basic Information

**Observed MW**

58kDa

**Calculated MW**

58kDa

**Category**

Polyclonal Antibody

**Applications**

WB,ELISA

**Cross-Reactivity**

Mouse,Rat

### Background

Predicted to enable chromatin binding activity. Involved in several processes, including negative regulation of cell growth; positive regulation of fibroblast apoptotic process; and regulation of transcription, DNA-templated. Located in cytosol and nucleus.

### Recommended Dilutions

**WB** 1:500 - 1:2000

**ELISA** Recommended starting concentration is 1 µg/mL. Please optimize the concentration based on your specific assay requirements.

### Immunogen Information

**Gene ID**

56981

**Swiss Prot**

Q9NQV5

**Immunogen**

Recombinant protein (or fragment). This information is considered to be commercially sensitive.

**Synonyms**

PFM8; PRDM11

### Contact



[www.abclonal.com](http://www.abclonal.com)

### Product Information

**Source**

Rabbit

**Isotype**

IgG

**Purification**

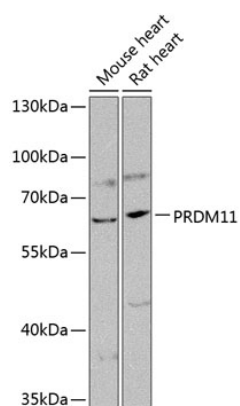
Affinity purification

**Storage**

Store at -20°C. Avoid freeze / thaw cycles.

Buffer: PBS with 0.02% sodium azide, 50% glycerol, pH7.3.

## Validation Data



Western blot analysis of various lysates using PRDM11 Rabbit pAb (A14143) at 1:1000 dilution.

Secondary antibody: HRP-conjugated Goat anti-Rabbit IgG (H+L) (AS014) at 1:10000 dilution.

Lysates/proteins: 25µg per lane.

Blocking buffer: 3% nonfat dry milk in TBST.

Detection: ECL Basic Kit (RM00020).

Exposure time: 90s.