

A14166

Leader in Biomolecular Solutions for Life Science



# METTL2A Rabbit pAb

Catalog No.: A14166

1 Publications

## Basic Information

### Observed MW

### Calculated MW

44kDa

### Category

Polyclonal Antibody

### Applications

IF/ICC,ELISA

### Cross-Reactivity

Human,Mouse,Rat

## Background

Enables tRNA (cytosine-3-)-methyltransferase activity. Involved in tRNA methylation.

## Recommended Dilutions

IF/ICC 1:50 - 1:200

ELISA Recommended starting concentration is 1 µg/mL. Please optimize the concentration based on your specific assay requirements.

## Immunogen Information

### Gene ID

339175

### Swiss Prot

Q96IZ6

### Immunogen

Recombinant protein (or fragment). This information is considered to be commercially sensitive.

### Synonyms

METTL2; METTL2A

## Contact

 [www.abclonal.com](http://www.abclonal.com)

## Product Information

### Source

Rabbit

### Isotype

IgG

### Purification

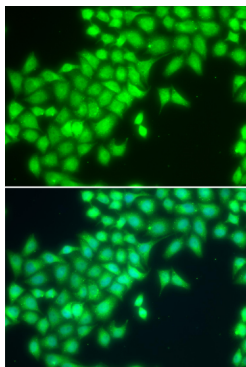
Affinity purification

### Storage

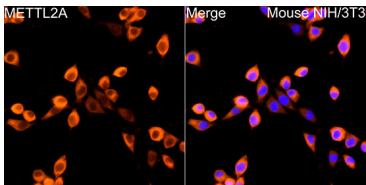
Store at -20°C. Avoid freeze / thaw cycles.

Buffer: PBS with 0.02% sodium azide, 50% glycerol, pH7.3.

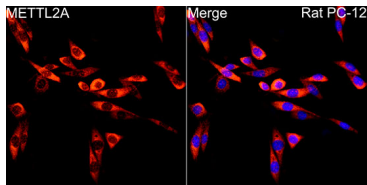
## Validation Data



Immunofluorescence analysis of MCF-7 cells using METTL2A Rabbit pAb (A14166). Secondary antibody: Cy3-conjugated Goat anti-Rabbit IgG (H+L) (AS007) at 1:500 dilution. Blue: DAPI for nuclear staining.



Immunofluorescence analysis of NIH/3T3 cells using METTL2A Rabbit pAb (A14166) at dilution of 1:200 (40x lens). Secondary antibody: Cy3-conjugated Goat anti-Rabbit IgG (H+L) (AS007) at 1:500 dilution. Blue: DAPI for nuclear staining.



Immunofluorescence analysis of PC-12 cells using METTL2A Rabbit pAb (A14166) at dilution of 1:200 (40x lens). Secondary antibody: Cy3-conjugated Goat anti-Rabbit IgG (H+L) (AS007) at 1:500 dilution. Blue: DAPI for nuclear staining.