

A14167

Leader in Biomolecular Solutions for Life Science



TMPRSS11A Rabbit pAb

Catalog No.: A14167

Basic Information

Observed MW

48kDa

Calculated MW

47kDa

Category

Polyclonal Antibody

Applications

WB,ELISA

Cross-Reactivity

Human,Mouse,Rat

Background

Predicted to enable serine-type endopeptidase activity. Predicted to be involved in proteolysis. Predicted to be located in extracellular region. Predicted to be integral component of plasma membrane.

Recommended Dilutions

WB 1:500 - 1:2000

ELISA Recommended starting concentration is 1 µg/mL. Please optimize the concentration based on your specific assay requirements.

Immunogen Information

Gene ID

339967

Swiss Prot

Q6ZMR5

Immunogen

Recombinant protein (or fragment). This information is considered to be commercially sensitive.

Synonyms

HESP; ECRG1; HATL1; TMPRSS11A

Contact



www.abclonal.com

Product Information

Source

Rabbit

Isotype

IgG

Purification

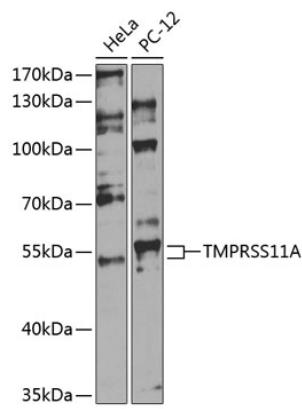
Affinity purification

Storage

Store at -20°C. Avoid freeze / thaw cycles.

Buffer: PBS with 0.02% sodium azide, 50% glycerol, pH7.3.

Validation Data



Western blot analysis of various lysates using TMPRSS11A Rabbit pAb (A14167) at 1:1000 dilution.
Secondary antibody: HRP-conjugated Goat anti-Rabbit IgG (H+L) (AS014) at 1:10000 dilution.
Lysates/proteins: 25µg per lane.
Blocking buffer: 3% nonfat dry milk in TBST.
Detection: ECL Basic Kit (RM00020).
Exposure time: 60s.