

A14357

Leader in Biomolecular Solutions for Life Science



## C2CD5 Rabbit pAb

Catalog No.: A14357

### Basic Information

**Observed MW**

110kDa

**Calculated MW**

110kDa

**Category**

Polyclonal Antibody

**Applications**

WB,ELISA

**Cross-Reactivity**

Human,Mouse,Rat

### Background

Enables calcium ion binding activity and calcium-dependent phospholipid binding activity. Involved in cellular response to insulin stimulus; intracellular protein transmembrane transport; and positive regulation of transport. Located in several cellular components, including centriolar satellite; cytoplasmic vesicle membrane; and ruffle membrane.

### Recommended Dilutions

**WB** 1:500 - 1:2000

**ELISA** Recommended starting concentration is 1 µg/mL. Please optimize the concentration based on your specific assay requirements.

### Immunogen Information

**Gene ID**

9847

**Swiss Prot**

Q86YS7

**Immunogen**

Recombinant protein (or fragment). This information is considered to be commercially sensitive.

**Synonyms**

CDP138; KIAA0528; C2CD5

### Contact



[www.abclonal.com](http://www.abclonal.com)

### Product Information

**Source**

Rabbit

**Isotype**

IgG

**Purification**

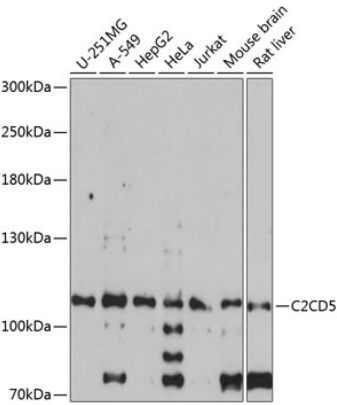
Affinity purification

**Storage**

Store at -20°C. Avoid freeze / thaw cycles.

Buffer: PBS with 0.01% thimerosal, 50% glycerol, pH7.3.

# Validation Data



Western blot analysis of various lysates using C2CD5 Rabbit pAb (A14357) at 1:1000 dilution.  
Secondary antibody: HRP-conjugated Goat anti-Rabbit IgG (H+L) (AS014) at 1:10000 dilution.  
Lysates/proteins: 25µg per lane.  
Blocking buffer: 3% nonfat dry milk in TBST.  
Detection: ECL Basic Kit (RM00020).  
Exposure time: 90s.