

A14359

Leader in Biomolecular Solutions for Life Science



CERCAM Rabbit pAb

Catalog No.: A14359

Basic Information

Observed MW

75kDa

Calculated MW

68kDa

Category

Polyclonal Antibody

Applications

WB, ELISA

Cross-Reactivity

Human

Background

Enables identical protein binding activity. Acts upstream of or within cell adhesion. Predicted to be located in endoplasmic reticulum lumen.

Recommended Dilutions

WB 1:500 - 1:2000

ELISA Recommended starting concentration is 1 µg/mL. Please optimize the concentration based on your specific assay requirements.

Immunogen Information

Gene ID

51148

Swiss Prot

Q5T4B2

Immunogen

Recombinant protein (or fragment). This information is considered to be commercially sensitive.

Synonyms

CEECAM1; GLT25D3; CERCAM

Contact



www.abclonal.com

Product Information

Source

Rabbit

Isotype

IgG

Purification

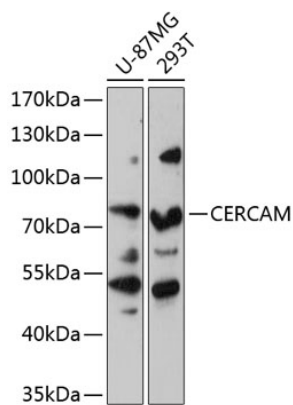
Affinity purification

Storage

Store at -20°C. Avoid freeze / thaw cycles.

Buffer: PBS with 0.01% thimerosal, 50% glycerol, pH 7.3.

Validation Data



Western blot analysis of various lysates using CERCAM Rabbit pAb (A14359) at 1:3000 dilution.
Secondary antibody: HRP-conjugated Goat anti-Rabbit IgG (H+L) (AS014) at 1:10000 dilution.
Lysates/proteins: 25µg per lane.
Blocking buffer: 3% nonfat dry milk in TBST.
Detection: ECL Basic Kit (RM00020).
Exposure time: 90s.