

A14363

Leader in Biomolecular Solutions for Life Science



MNS1 Rabbit pAb

Catalog No.: A14363

Basic Information

Observed MW

60kDa

Calculated MW

61kDa

Category

Polyclonal Antibody

Applications

WB,ELISA

Cross-Reactivity

Human,Mouse,Rat

Background

This gene encodes a protein highly similar to the mouse meiosis-specific nuclear structural 1 protein. The mouse protein was shown to be expressed at the pachytene stage during spermatogenesis and may function as a nuclear skeletal protein to regulate nuclear morphology during meiosis.

Recommended Dilutions

WB 1:500 - 1:2000

ELISA Recommended starting concentration is 1 µg/mL. Please optimize the concentration based on your specific assay requirements.

Immunogen Information

Gene ID

55329

Swiss Prot

Q8NEH6

Immunogen

Recombinant protein (or fragment). This information is considered to be commercially sensitive.

Synonyms

HTX9; SPATA40; MNS1

Contact



www.abclonal.com

Product Information

Source

Rabbit

Isotype

IgG

Purification

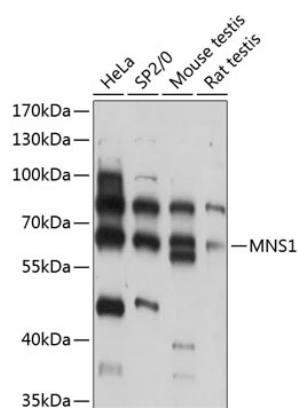
Affinity purification

Storage

Store at -20°C. Avoid freeze / thaw cycles.

Buffer: PBS with 0.01% thimerosal, 50% glycerol, pH7.3.

Validation Data



Western blot analysis of various lysates using MNS1 Rabbit pAb (A14363) at 1:3000 dilution.

Secondary antibody: HRP-conjugated Goat anti-Rabbit IgG (H+L) (AS014) at 1:10000 dilution.

Lysates/proteins: 25µg per lane.

Blocking buffer: 3% nonfat dry milk in TBST.

Detection: ECL Basic Kit (RM00020).

Exposure time: 30s.