

A14367

Leader in Biomolecular Solutions for Life Science



SLMAP Rabbit pAb

Catalog No.: A14367

Basic Information

Observed MW

45kDa

Calculated MW

95kDa

Category

Polyclonal Antibody

Applications

WB,ELISA

Cross-Reactivity

Mouse,Rat

Background

This gene encodes a component of a conserved striatin-interacting phosphatase and kinase complex. Striatin family complexes participate in a variety of cellular processes including signaling, cell cycle control, cell migration, Golgi assembly, and apoptosis. The protein encoded by this gene is a coiled-coil, tail-anchored membrane protein with a single C-terminal transmembrane domain that is posttranslationally inserted into membranes. Mutations in this gene are associated with Brugada syndrome, a cardiac channelopathy. Alternative splicing results in multiple transcript variants.

Recommended Dilutions

WB 1:500 - 1:2000

ELISA Recommended starting concentration is 1 µg/mL. Please optimize the concentration based on your specific assay requirements.

Immunogen Information

Gene ID

7871

Swiss Prot

Q14BN4

Immunogen

Recombinant protein (or fragment). This information is considered to be commercially sensitive.

Synonyms

SLAP; SLMAP

Contact

 www.abclonal.com

Product Information

Source

Rabbit

Isotype

IgG

Purification

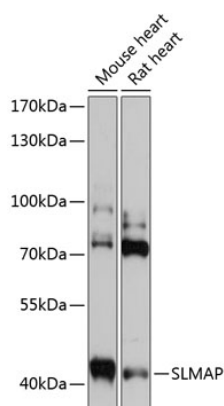
Affinity purification

Storage

Store at -20°C. Avoid freeze / thaw cycles.

Buffer: PBS with 0.01% thimerosal, 50% glycerol, pH7.3.

Validation Data



Western blot analysis of various lysates using SLMAP Rabbit pAb (A14367) at 1:3000 dilution.

Secondary antibody: HRP-conjugated Goat anti-Rabbit IgG (H+L) (AS014) at 1:10000 dilution.

Lysates/proteins: 25µg per lane.

Blocking buffer: 3% nonfat dry milk in TBST.

Detection: ECL Basic Kit (RM00020).

Exposure time: 30s.