

A14604

Leader in Biomolecular Solutions for Life Science



RFPL2 Rabbit pAb

Catalog No.: A14604

Basic Information

Observed MW

42kDa

Calculated MW

42kDa

Category

Polyclonal Antibody

Applications

WB,ELISA

Cross-Reactivity

Human,Rat

Background

Predicted to enable ubiquitin-protein transferase activity. Predicted to be involved in positive regulation of transcription, DNA-templated. Predicted to be active in chromatin and nucleoplasm.

Recommended Dilutions

WB 1:500 - 1:2000

ELISA Recommended starting concentration is 1 µg/mL. Please optimize the concentration based on your specific assay requirements.

Immunogen Information

Gene ID

10739

Swiss Prot

O75678

Immunogen

Synthetic peptide. This information is considered to be commercially sensitive.

Synonyms

RNF79; RFPL2

Contact



www.abclonal.com

Product Information

Source

Rabbit

Isotype

IgG

Purification

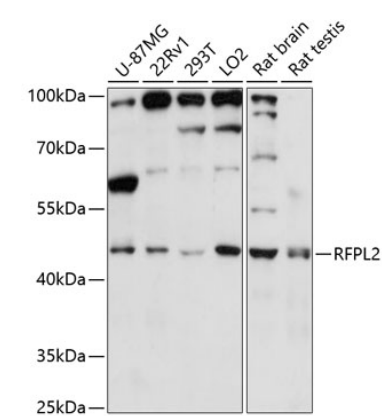
Affinity purification

Storage

Store at -20°C. Avoid freeze / thaw cycles.

Buffer: PBS with 0.01% thimerosal, 50% glycerol, pH7.3.

Validation Data



Western blot analysis of various lysates using RFPL2 Rabbit pAb (A14604) at 1:3000 dilution.
Secondary antibody: HRP-conjugated Goat anti-Rabbit IgG (H+L) (AS014) at 1:10000 dilution.
Lysates/proteins: 25µg per lane.
Blocking buffer: 3% nonfat dry milk in TBST.
Detection: ECL Enhanced Kit (RM00021).
Exposure time: 30s.