

A14608

Leader in Biomolecular Solutions for Life Science



RNASE12 Rabbit pAb

Catalog No.: A14608

Basic Information

Observed MW

17kDa

Calculated MW

17kDa

Category

Polyclonal Antibody

Applications

WB,ELISA

Cross-Reactivity

Human

Background

Predicted to enable nucleic acid binding activity. Predicted to be located in extracellular region.

Recommended Dilutions

WB 1:500 - 1:2000

ELISA Recommended starting concentration is 1 µg/mL. Please optimize the concentration based on your specific assay requirements.

Immunogen Information

Gene ID

493901

Swiss Prot

Q5GAN4

Immunogen

Synthetic peptide. This information is considered to be commercially sensitive.

Synonyms

RAI1; HEL-S-85p; RNASE12

Contact

 www.abclonal.com

Product Information

Source

Rabbit

Isotype

IgG

Purification

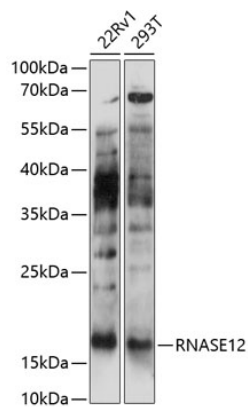
Affinity purification

Storage

Store at -20°C. Avoid freeze / thaw cycles.

Buffer: PBS with 0.01% thimerosal, 50% glycerol, pH7.3.

Validation Data



Western blot analysis of various lysates using RNASE12 Rabbit pAb (A14608) at 1:1000 dilution.

Secondary antibody: HRP-conjugated Goat anti-Rabbit IgG (H+L) (AS014) at 1:10000 dilution.

Lysates/proteins: 25µg per lane.

Blocking buffer: 3% nonfat dry milk in TBST.

Detection: ECL Basic Kit (RM00020).

Exposure time: 90s.