

A14639

Leader in Biomolecular Solutions for Life Science



# GDNF Rabbit pAb

Catalog No.: A14639

11 Publications

## Basic Information

### Observed MW

24kDa

### Calculated MW

24kDa

### Category

Polyclonal Antibody

### Applications

WB,IF/ICC,ELISA

### Cross-Reactivity

Human,Mouse,Rat

## Background

This gene encodes a secreted ligand of the TGF-beta (transforming growth factor-beta) superfamily of proteins. Ligands of this family bind various TGF-beta receptors leading to recruitment and activation of SMAD family transcription factors that regulate gene expression. The encoded preproprotein is proteolytically processed to generate each subunit of the disulfide-linked homodimer. The recombinant form of this protein, a highly conserved neurotrophic factor, was shown to promote the survival and differentiation of dopaminergic neurons in culture, and was able to prevent apoptosis of motor neurons induced by axotomy. This protein is a ligand for the product of the RET (rearranged during transfection) protooncogene. Mutations in this gene may be associated with Hirschsprung disease and Tourette syndrome. This gene encodes multiple protein isoforms that may undergo similar proteolytic processing.

## Recommended Dilutions

WB 1:500 - 1:2000

IF/ICC 1:50 - 1:200

ELISA Recommended starting concentration is 1 µg/mL. Please optimize the concentration based on your specific assay requirements.

## Immunogen Information

### Gene ID

2668

### Swiss Prot

P39905

### Immunogen

Recombinant protein (or fragment). This information is considered to be commercially sensitive.

### Synonyms

ATF; ATF1; ATF2; HSCR3; HFB1-GDNF; GDNF

## Contact

[www.abclonal.com](http://www.abclonal.com)

## Product Information

### Source

Rabbit

### Isotype

IgG

### Purification

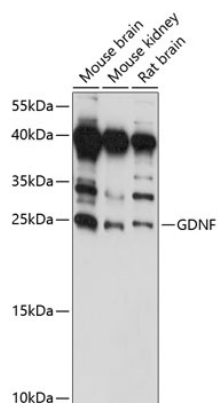
Affinity purification

### Storage

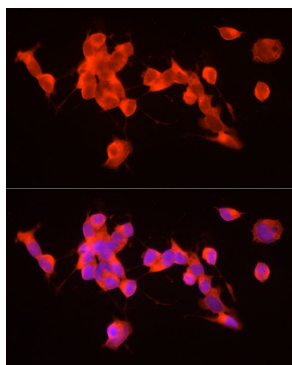
Store at -20°C. Avoid freeze / thaw cycles.

Buffer: PBS with 0.01% thimerosal, 50% glycerol, pH7.3.

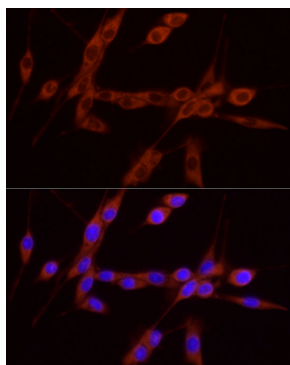
## Validation Data



Western blot analysis of various lysates using GDNF Rabbit pAb (A14639) at 1:1000 dilution.  
Secondary antibody: HRP-conjugated Goat anti-Rabbit IgG (H+L) (AS014) at 1:10000 dilution.  
Lysates/proteins: 25µg per lane.  
Blocking buffer: 3% nonfat dry milk in TBST.  
Detection: ECL Basic Kit (RM00020).  
Exposure time: 60s.



Immunofluorescence analysis of SH-SY5Y cells using GDNF Rabbit pAb (A14639) at dilution of 1:100 (40x lens). Secondary antibody: Cy3-conjugated Goat anti-Rabbit IgG (H+L) (AS007) at 1:500 dilution. Blue: DAPI for nuclear staining.



Immunofluorescence analysis of U-87MG cells using GDNF Rabbit pAb (A14639) at dilution of 1:100 (40x lens). Secondary antibody: Cy3-conjugated Goat anti-Rabbit IgG (H+L) (AS007) at 1:500 dilution. Blue: DAPI for nuclear staining.