

A14819

Leader in Biomolecular Solutions for Life Science



## LPAR2 Rabbit pAb

Catalog No.: A14819

### Basic Information

#### Observed MW

38kDa

#### Calculated MW

39kDa

#### Category

Polyclonal Antibody

#### Applications

WB, ELISA

#### Cross-Reactivity

Human

### Background

This gene encodes a member of family I of the G protein-coupled receptors, as well as the EDG family of proteins. This protein functions as a lysophosphatidic acid (LPA) receptor and contributes to  $Ca^{2+}$  mobilization, a critical cellular response to LPA in cells, through association with  $G_i$  and  $G_q$  proteins. An alternative splice variant has been described but its full length sequence has not been determined.

### Recommended Dilutions

**WB** 1:500 - 1:2000

**ELISA** Recommended starting concentration is 1  $\mu$ g/mL. Please optimize the concentration based on your specific assay requirements.

### Immunogen Information

**Gene ID**  
9170

**Swiss Prot**  
Q9HBW0

#### Immunogen

Synthetic peptide. This information is considered to be commercially sensitive.

#### Synonyms

EDG4; LPA2; EDG-4; LPA-2; LPAR2

### Contact



[www.abclonal.com](http://www.abclonal.com)

### Product Information

**Source**  
Rabbit

**Isotype**  
IgG

**Purification**  
Affinity purification

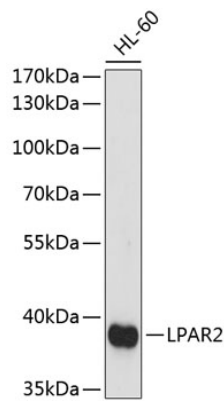
#### Storage

Store at  $-20^{\circ}\text{C}$ . Avoid freeze / thaw cycles.

Buffer: PBS with 0.01% thimerosal, 50% glycerol, pH7.3.

## Validation Data

---



Western blot analysis of lysates from HL-60 cells, using LPAR2 Rabbit pAb (A14819) at 1:1000 dilution.

Secondary antibody: HRP-conjugated Goat anti-Rabbit IgG (H+L) (AS014) at 1:10000 dilution.

Lysates/proteins: 25µg per lane.

Blocking buffer: 3% nonfat dry milk in TBST.

Detection: ECL Basic Kit (RM00020).

Exposure time: 90s.