

A14842

Leader in Biomolecular Solutions for Life Science



ARL6IP5 Rabbit pAb

Catalog No.: A14842

Basic Information

Observed MW

22kDa

Calculated MW

22kDa

Category

Polyclonal Antibody

Applications

WB, ELISA

Cross-Reactivity

Mouse

Background

Expression of this gene is affected by vitamin A. The encoded protein of this gene may be associated with the cytoskeleton. A similar protein in rats may play a role in the regulation of cell differentiation. The rat protein binds and inhibits the cell membrane glutamate transporter EAAC1. The expression of the rat gene is upregulated by retinoic acid, which results in a specific reduction in EAAC1-mediated glutamate transport.

Recommended Dilutions

WB 1:500 - 1:2000

ELISA Recommended starting concentration is 1 µg/mL. Please optimize the concentration based on your specific assay requirements.

Immunogen Information

Gene ID
10550

Swiss Prot
O75915

Immunogen

Synthetic peptide. This information is considered to be commercially sensitive.

Synonyms

JWA; jmx; hp22; PRAF3; Yip6b; DERP11; HSPC127; addicsin; GTRAP3-18; ARL6IP5

Contact

 www.abclonal.com

Product Information

Source
Rabbit

Isotype
IgG

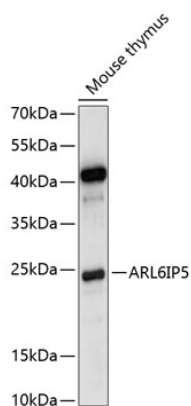
Purification
Affinity purification

Storage

Store at -20°C. Avoid freeze / thaw cycles.

Buffer: PBS with 0.01% thimerosal, 50% glycerol, pH7.3.

Validation Data



Western blot analysis of lysates from mouse thymus, using ARL6IP5 Rabbit pAb (A14842) at 1:1000 dilution.

Secondary antibody: HRP-conjugated Goat anti-Rabbit IgG (H+L) (AS014) at 1:10000 dilution.

Lysates/proteins: 25µg per lane.

Blocking buffer: 3% nonfat dry milk in TBST.

Detection: ECL Basic Kit (RM00020).

Exposure time: 5s.