

A14891

Leader in Biomolecular Solutions for Life Science



ZCCHC17 Rabbit pAb

Catalog No.: A14891

Basic Information

Observed MW

27kDa

Calculated MW

28kDa

Category

Polyclonal Antibody

Applications

WB, ELISA

Cross-Reactivity

Mouse

Background

Enables identical protein binding activity. Predicted to be involved in RNA stabilization. Predicted to be located in nucleolus. Predicted to be part of cytosolic large ribosomal subunit.

Recommended Dilutions

WB 1:500 - 1:2000

ELISA Recommended starting concentration is 1 µg/mL. Please optimize the concentration based on your specific assay requirements.

Immunogen Information

Gene ID

51538

Swiss Prot

Q9NP64

Immunogen

Recombinant protein (or fragment). This information is considered to be commercially sensitive.

Synonyms

PS1D; pNO40; HSPC251; ZCCHC17

Contact



www.abclonal.com

Product Information

Source

Rabbit

Isotype

IgG

Purification

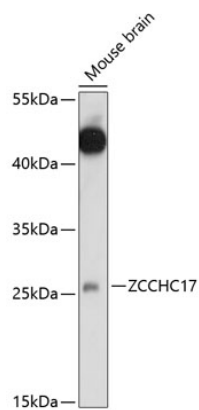
Affinity purification

Storage

Store at -20°C. Avoid freeze / thaw cycles.

Buffer: PBS with 0.01% thimerosal, 50% glycerol, pH 7.3.

Validation Data



Western blot analysis of lysates from mouse brain, using ZCCHC17 Rabbit pAb (A14891) at 1:1000 dilution.

Secondary antibody: HRP-conjugated Goat anti-Rabbit IgG (H+L) (AS014) at 1:10000 dilution.

Lysates/proteins: 25µg per lane.

Blocking buffer: 3% nonfat dry milk in TBST.

Detection: ECL Basic Kit (RM00020).

Exposure time: 30s.