

A14965

Leader in Biomolecular Solutions for Life Science



SLC23A3 Rabbit pAb

Catalog No.: A14965

Basic Information

Observed MW

54kDa

Calculated MW

65kDa

Category

Polyclonal Antibody

Applications

WB,ELISA

Cross-Reactivity

Mouse

Background

Predicted to enable transmembrane transporter activity. Predicted to be involved in transmembrane transport. Predicted to be integral component of membrane.

Recommended Dilutions

WB 1:500 - 1:2000

ELISA Recommended starting concentration is 1 µg/mL. Please optimize the concentration based on your specific assay requirements.

Immunogen Information

Gene ID

151295

Swiss Prot

Q6PIS1

Immunogen

Recombinant protein (or fragment). This information is considered to be commercially sensitive.

Synonyms

E2BP3; SVCT3; Yspl1; SLC23A3

Contact



www.abclonal.com

Product Information

Source

Rabbit

Isotype

IgG

Purification

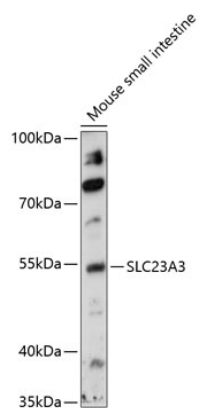
Affinity purification

Storage

Store at -20°C. Avoid freeze / thaw cycles.

Buffer: PBS with 0.01% thimerosal, 50% glycerol, pH7.3.

Validation Data



Western blot analysis of lysates from mouse small intestine, using SLC23A3 Rabbit pAb (A14965) at 1:1000 dilution.

Secondary antibody: HRP-conjugated Goat anti-Rabbit IgG (H+L) (AS014) at 1:10000 dilution.

Lysates/proteins: 25µg per lane.

Blocking buffer: 3% nonfat dry milk in TBST.

Detection: ECL Basic Kit (RM00020).

Exposure time: 90s.