

A15163

Leader in Biomolecular Solutions for Life Science



TERF2IP Rabbit pAb

Catalog No.: A15163

1 Publications

Basic Information

Observed MW

55kDa

Calculated MW

44kDa

Category

Polyclonal Antibody

Applications

WB,IF/ICC,ELISA

Cross-Reactivity

Human

Background

Enables G-rich strand telomeric DNA binding activity and phosphatase binding activity. Involved in several processes, including positive regulation of NIK/NF-kappaB signaling; regulation of nucleobase-containing compound metabolic process; and regulation of protein modification process. Located in chromosome, telomeric region; cytosol; and nuclear body. Part of shelterin complex.

Recommended Dilutions

WB 1:500 - 1:2000

IF/ICC 1:50 - 1:200

ELISA Recommended starting concentration is 1 µg/mL. Please optimize the concentration based on your specific assay requirements.

Immunogen Information

Gene ID

54386

Swiss Prot

Q9NYB0

Immunogen

Recombinant protein (or fragment). This information is considered to be commercially sensitive.

Synonyms

RAP1; DRIP5; TERF2IP

Contact



www.abclonal.com

Product Information

Source

Rabbit

Isotype

IgG

Purification

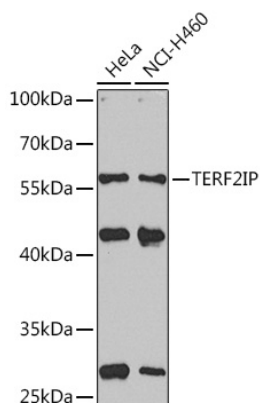
Affinity purification

Storage

Store at -20°C. Avoid freeze / thaw cycles.

Buffer: PBS with 0.02% sodium azide, 50% glycerol, pH 7.3.

Validation Data



Western blot analysis of various lysates using TERF2IP Rabbit pAb (A15163) at 1:1000 dilution.

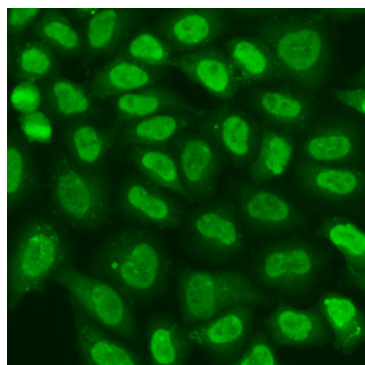
Secondary antibody: HRP-conjugated Goat anti-Rabbit IgG (H+L) (AS014) at 1:10000 dilution.

Lysates/proteins: 25µg per lane.

Blocking buffer: 3% nonfat dry milk in TBST.

Detection: ECL Basic Kit (RM00020).

Exposure time: 90s.



Immunofluorescence analysis of U2OS cells using TERF2IP Rabbit pAb (A15163) at dilution of 1:100.

Secondary antibody: Cy3-conjugated Goat anti-Rabbit IgG (H+L) (AS007) at 1:500 dilution. Blue: DAPI for nuclear staining.