

A15198

Leader in Biomolecular Solutions for Life Science



ARL6 Rabbit pAb

Catalog No.: A15198

1 Publications

Basic Information

Observed MW

Refer to figures

Calculated MW

21kDa

Category

Polyclonal Antibody

Applications

WB,IF/ICC,ELISA

Cross-Reactivity

Human,Mouse

Background

The protein encoded by this gene belongs to the ARF-like (ADP ribosylation factor-like) sub-family of the ARF family of GTP-binding proteins which are involved in regulation of intracellular traffic. Mutations in this gene are associated with Bardet-Biedl syndrome (BBS). A vision-specific transcript, encoding long isoform BBS3L, has been described (PMID: 20333246).

Recommended Dilutions

WB 1:500 - 1:2000

IF/ICC 1:50 - 1:200

ELISA Recommended starting concentration is 1 µg/mL. Please optimize the concentration based on your specific assay requirements.

Immunogen Information

Gene ID

84100

Swiss Prot

Q9H0F7

Immunogen

Recombinant protein (or fragment). This information is considered to be commercially sensitive.

Synonyms

BBS3; RP55; ARL6

Contact



www.abclonal.com

Product Information

Source

Rabbit

Isotype

IgG

Purification

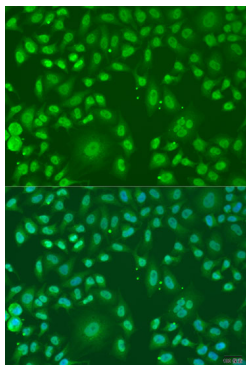
Affinity purification

Storage

Store at -20°C. Avoid freeze / thaw cycles.

Buffer: PBS with 0.02% sodium azide, 50% glycerol, pH 7.3.

Validation Data



Immunofluorescence analysis of U2OS cells using ARL6 Rabbit pAb (A15198) at dilution of 1:100. Secondary antibody: Cy3-conjugated Goat anti-Rabbit IgG (H+L) (AS007) at 1:500 dilution. Blue: DAPI for nuclear staining.