

A15224

Leader in Biomolecular Solutions for Life Science



## PLA2G4D Rabbit pAb

Catalog No.: A15224

### Basic Information

#### Observed MW

#### Calculated MW

92kDa

#### Category

Polyclonal Antibody

#### Applications

IF/ICC,ELISA

#### Cross-Reactivity

Human

### Background

The phospholipase A2 enzyme family, including PLA2G4D, catalyze the hydrolysis of glycerophospholipids at the sn-2 position and then liberate free fatty acids and lysophospholipids (Chiba et al., 2004 [PubMed 14709560]).

### Recommended Dilutions

IF/ICC 1:50 - 1:200

ELISA Recommended starting concentration is 1 µg/mL. Please optimize the concentration based on your specific assay requirements.

### Immunogen Information

#### Gene ID

283748

#### Swiss Prot

Q86XP0

#### Immunogen

Recombinant protein (or fragment). This information is considered to be commercially sensitive.

#### Synonyms

cPLA2delta; PLA2G4D

### Contact



[www.abclonal.com](http://www.abclonal.com)

### Product Information

#### Source

Rabbit

#### Isotype

IgG

#### Purification

Affinity purification

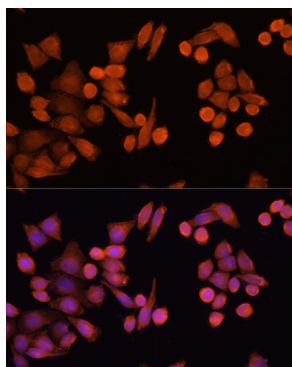
#### Storage

Store at -20°C. Avoid freeze / thaw cycles.

Buffer: PBS with 0.01% thimerosal, 50% glycerol, pH7.3.

## Validation Data

---



Immunofluorescence analysis of HeLa cells using PLA2G4D Rabbit pAb (A15224) at dilution of 1:100 (40x lens). Secondary antibody: Cy3-conjugated Goat anti-Rabbit IgG (H+L) (AS007) at 1:500 dilution. Blue: DAPI for nuclear staining.